

The Banks – Phase 3C  
Public Infrastructure Development  
Bid Package #2 – Lot 28 Park & Garage  
January 21, 2022  
THP #98090.40

## **ADDENDUM #4**

### QUESTIONS AND ANSWERS:

1. Please confirm the locations of where epoxy rebar is to be used for Bid Package 2 work?
  - **Response to question 1:** Refer to Structural Notes Section D (Reinforcing Steel), Note 4 on Drawing S001 (in general, there should be no epoxy coated rebar in BP#2, because podium structure is covered with waterproofing membrane, columns are in BP#1, and site foundations and support slabs do not contain epoxy rebar).
2. What is the size of the S4 Wall Foundation Pipe Size on L200?
  - **Response to question 2:** A 4” perforated pipe is called out on details 14 and 15 on sheet L400, as well as in the legend on sheet C102.
3. How many cleanouts are expected, and what locations?
  - **Response to question 3:** Cleanout locations are referenced on sheet C102 (plan label CO). The brick slot covers called out on the trench drains are also an access point and serve the same function as a “cleanout”. There are vertical cleanouts at the tree pit drains per Details 14/L400 and C/P001. There are also underdrain cleanouts per Detail 14/L400 for every tree located on structure in an enclosed “tree pit”. [also note: for Detail 14/L400, the underdrain note should reference Detail 9/L400 (not Detail 7/L303)].
4. Please confirm ALL underdrain for walls and planting areas are shown on L200?
  - **Response to question 4:** Yes. Also refer to civil, structural, and architectural plans for tie-in locations. If no tie-in locations are noted, contractor shall tie wall underdrains into the nearest storm utility location.
5. Will there be any excavation and haul away for me for planter beds on grade to get to correct depth before planting soils? Or will all areas be excavated to correct depth and ready for me to add planting soil?
  - **Response to question 5:** TC-03 is to provide rough subgrade for planting soils to be installed.
6. 9/L400 references “concrete collar” however does not show “any” concrete collar? The previous sections of the Icon Theater had concrete poured around the tops of each pipe for the housing of the cleanout cover to rest on. Is this concrete required and if so, what package is responsible for it?
  - **Response to question 6:** The collar at underdrain cleanouts was removed from the detail as the locations are in plant beds and will not have vehicular traffic over them, negating the necessity of the concrete collars. Delete reference to ‘concrete collar’ from note/detail. Protect pipe/cleanout during construction.

7. Can you provide a spec for the inground junction boxes? For example, Quazite or Concrete?
  - **Response to question 7:** Pullboxes – pullboxes shall be constructed of reinforced concrete (either 3500 psi poured-in-place, or precast type), complete with cover, accessories and accommodations for duct banks shown. Refer to Detail 4/E005 also. Construction shall be for heavy-duty traffic service to meet ODOT spec H20. Handholes – constructed of polymer concrete reinforced with fiberglass. Cover to be bolted with stainless steel pentahead bolts. Manufactured by Quazite, Oldcastle, or MacLean Highline.
8. Is conduit feeding the lights and junction boxes in the parking garage area shown on E201 to be ran above in dirt or below the podium on the garage ceiling?
  - **Response to question 8:** Conduit and junction boxes for lighting in the garage shall be run on the ceiling in the garage area; refer to Details 1, 2, and 3 on E005 for expansion joint, fire alarm conduits and such. Conduits shall be galvanized rigid type per Section 26 05 33-3.2 (conduits exposed in the parking garage or to the public shall be rigid or intermediate rigid type conduits. No EMT conduits shall be installed in any public areas). Sheet E201 Upper Level Lighting Plan notes where conduits are to be run in the fill south of the garage expansion.
9. For conduit above the podium, is it to be ran in rigid conduit or EMT?
  - **Response to question 9:** Any exposed conduits shall be galvanized rigid conduit per Section 26 05 33.

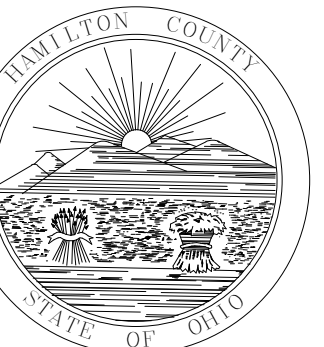
#### DRAWINGS:

1. **Drawing A202:** (Sheet Reissued)
  - Extents of west granite cladding at the Elm St. Stair entry marker have been adjusted. See revision clouds.
2. **Drawing A240:** (Sheet Reissued)
  - Delete/disregard detail 3/A240 - refer to A801 for details on the back of concrete wall mounted rail.
  - Railing key plan, detail 5/A240, added for clarity.
  - The title of detail 4/A240 has been updated.
3. **Drawing A801:** (Clarification)
  - Delete/disregard Details 3 & 4/A801 – there are no longer any glass railings in BP #2.
4. **Drawing S201:** (Sheet Reissued)
  - Revise Section 11/S201 to accommodate seating bench along Mehring Way sidewalk.

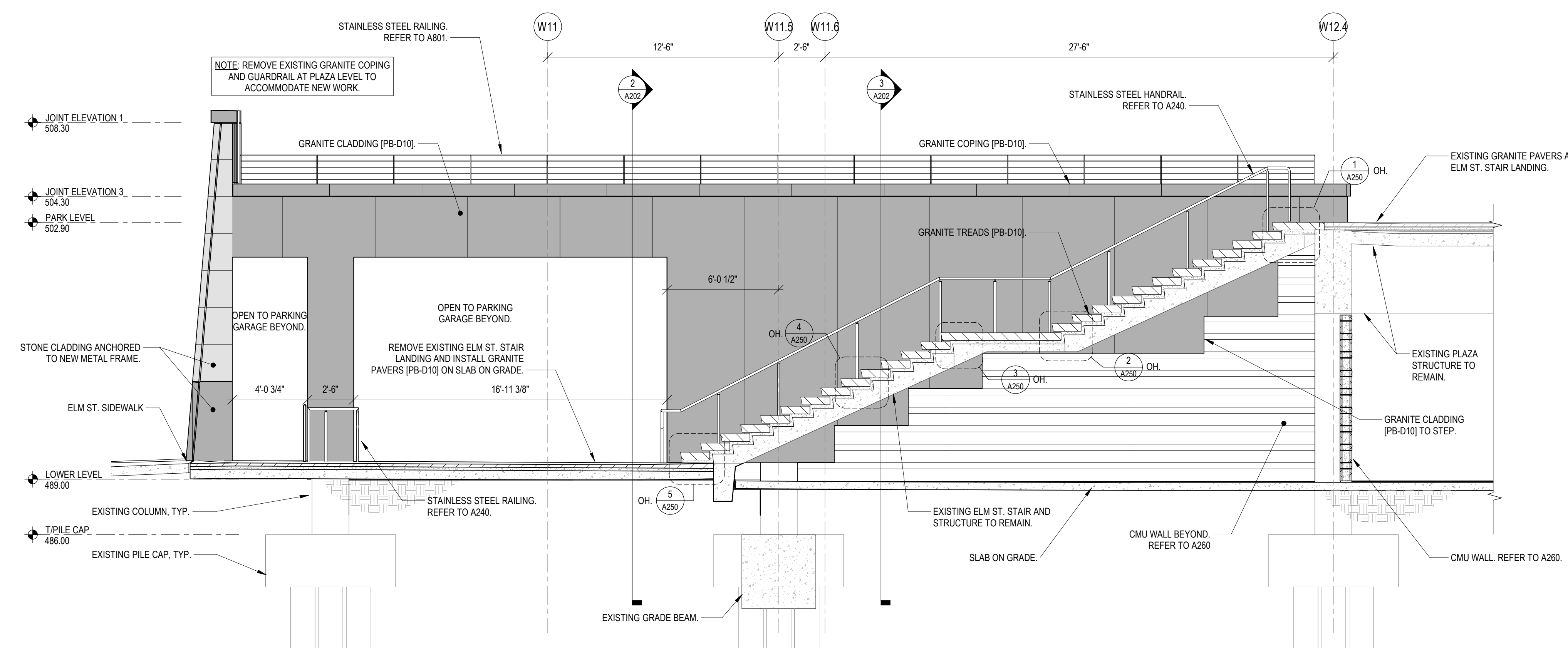
ATTACHMENTS:

1. Drawing A202.
2. Drawing A240.
3. Drawing S201.

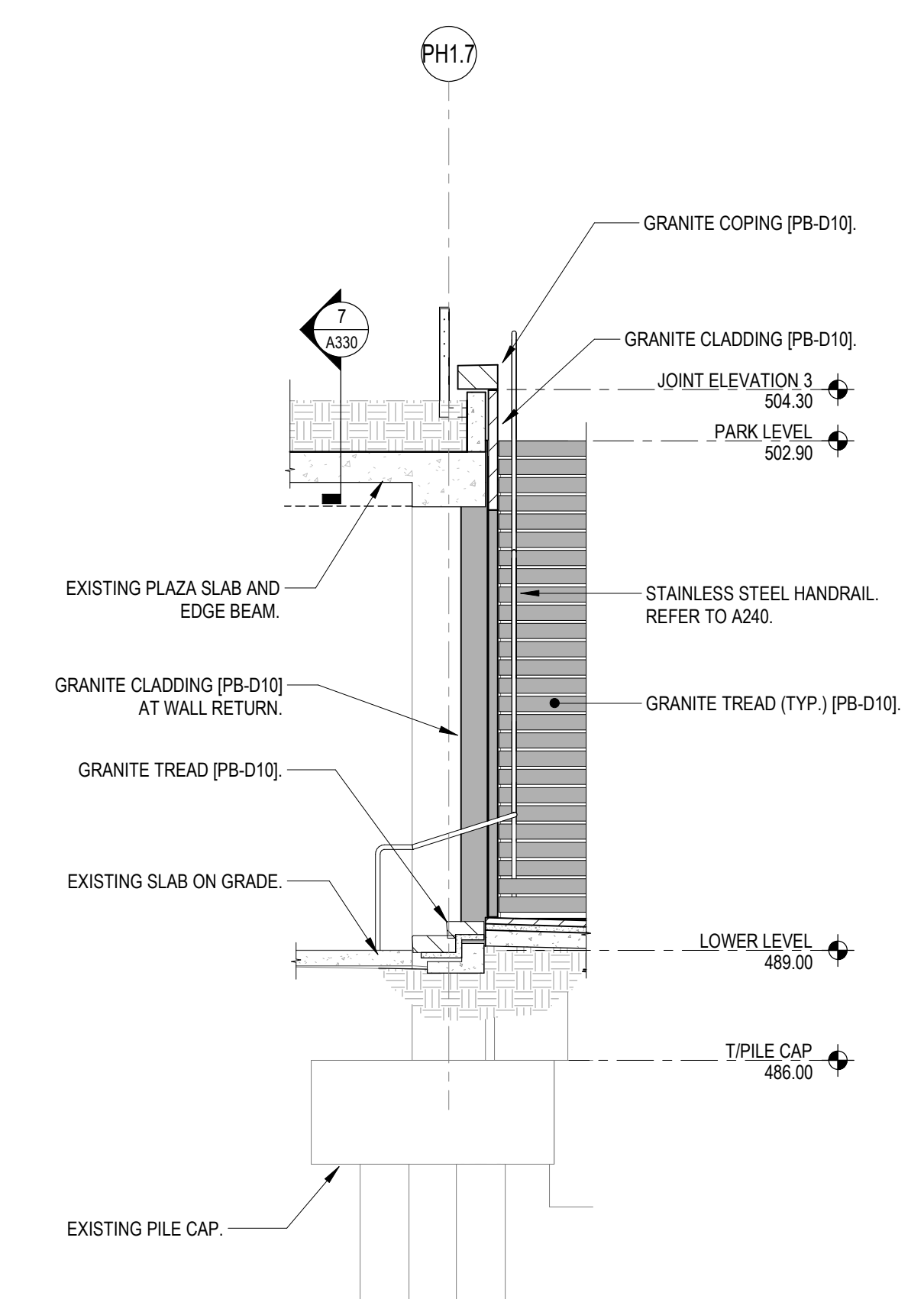
End



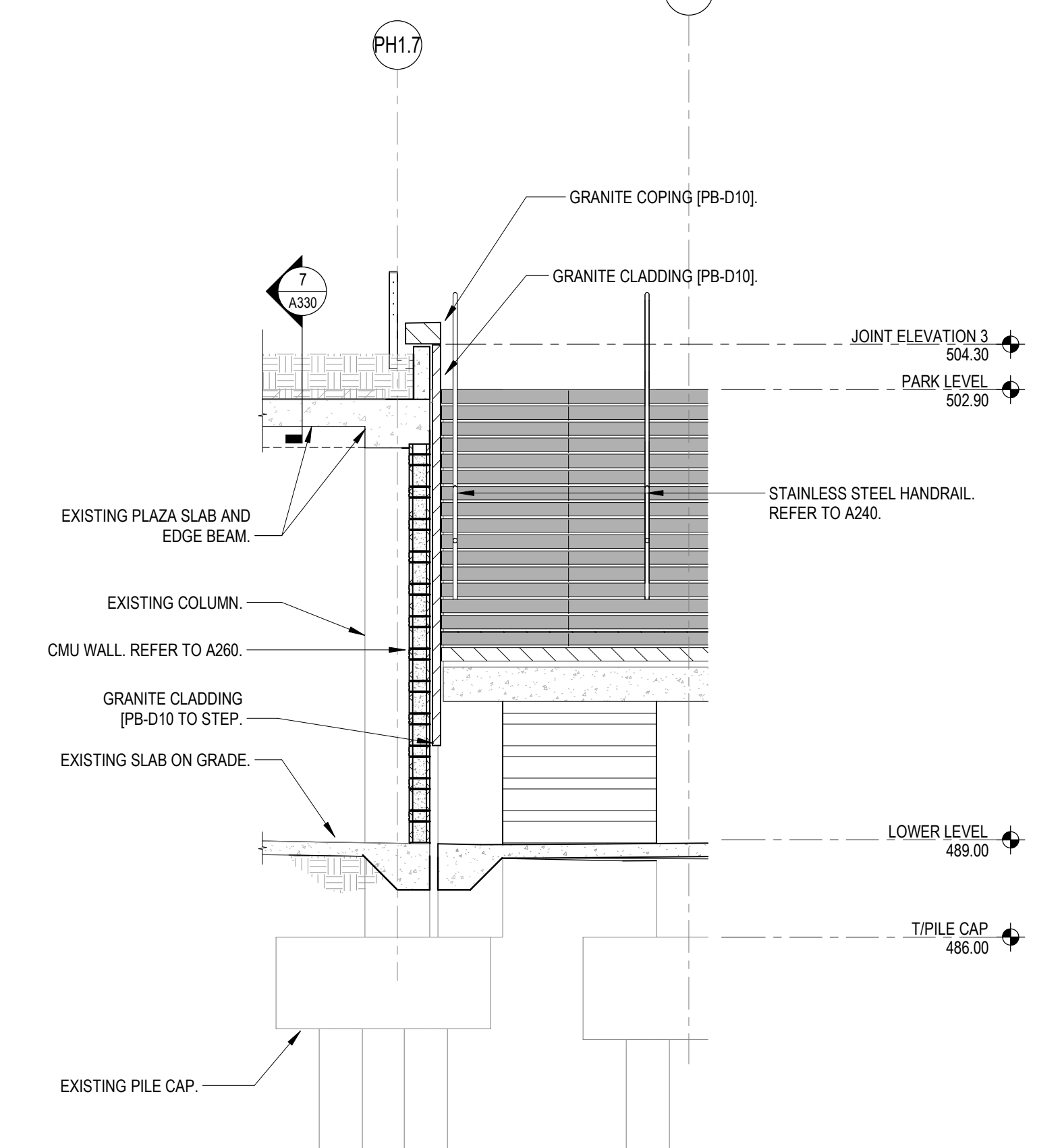
This document is the product and property of THP Limited. Neither the document nor the information it contains may be copied or reused for other than the specific project for which it was prepared without the written consent of THP Limited.



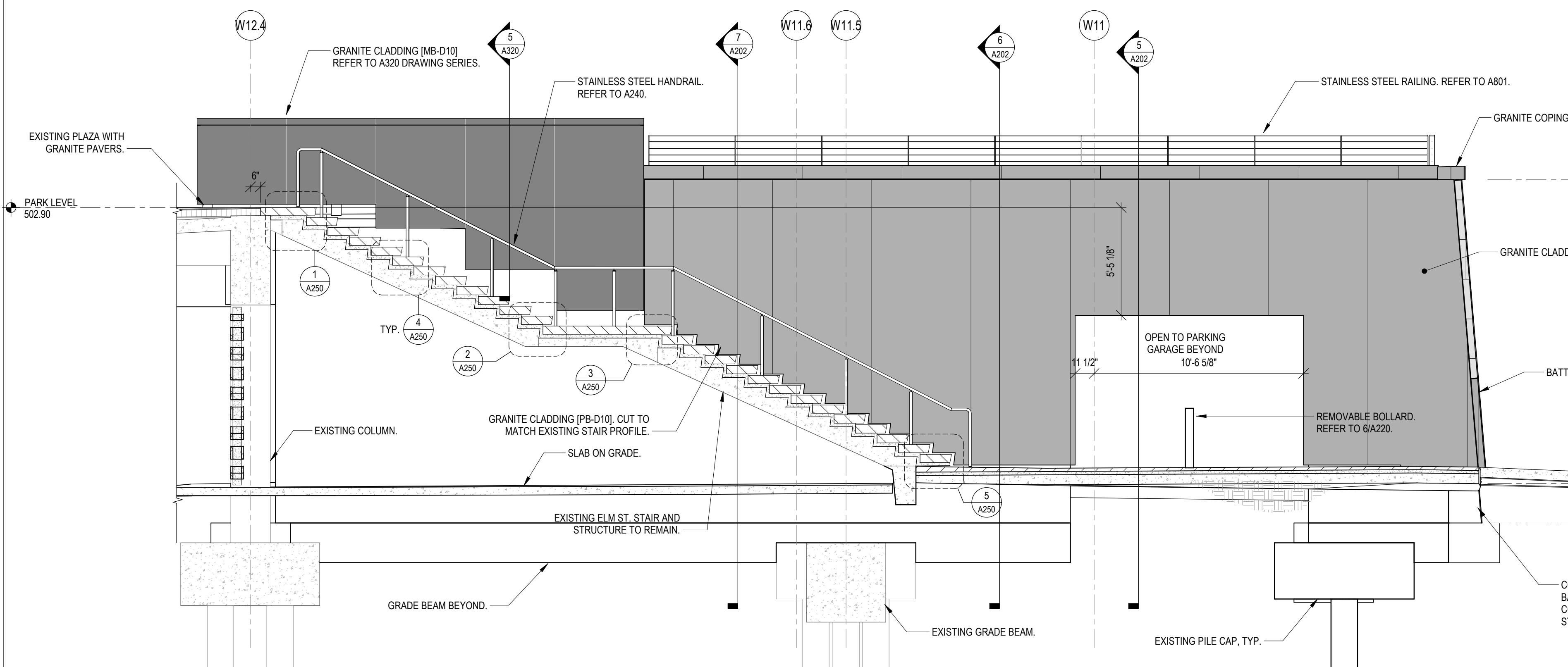
1  
ELM ST. STAIR  
**NORTH ELEVATION**  
A202 1/4" = 1'-0"



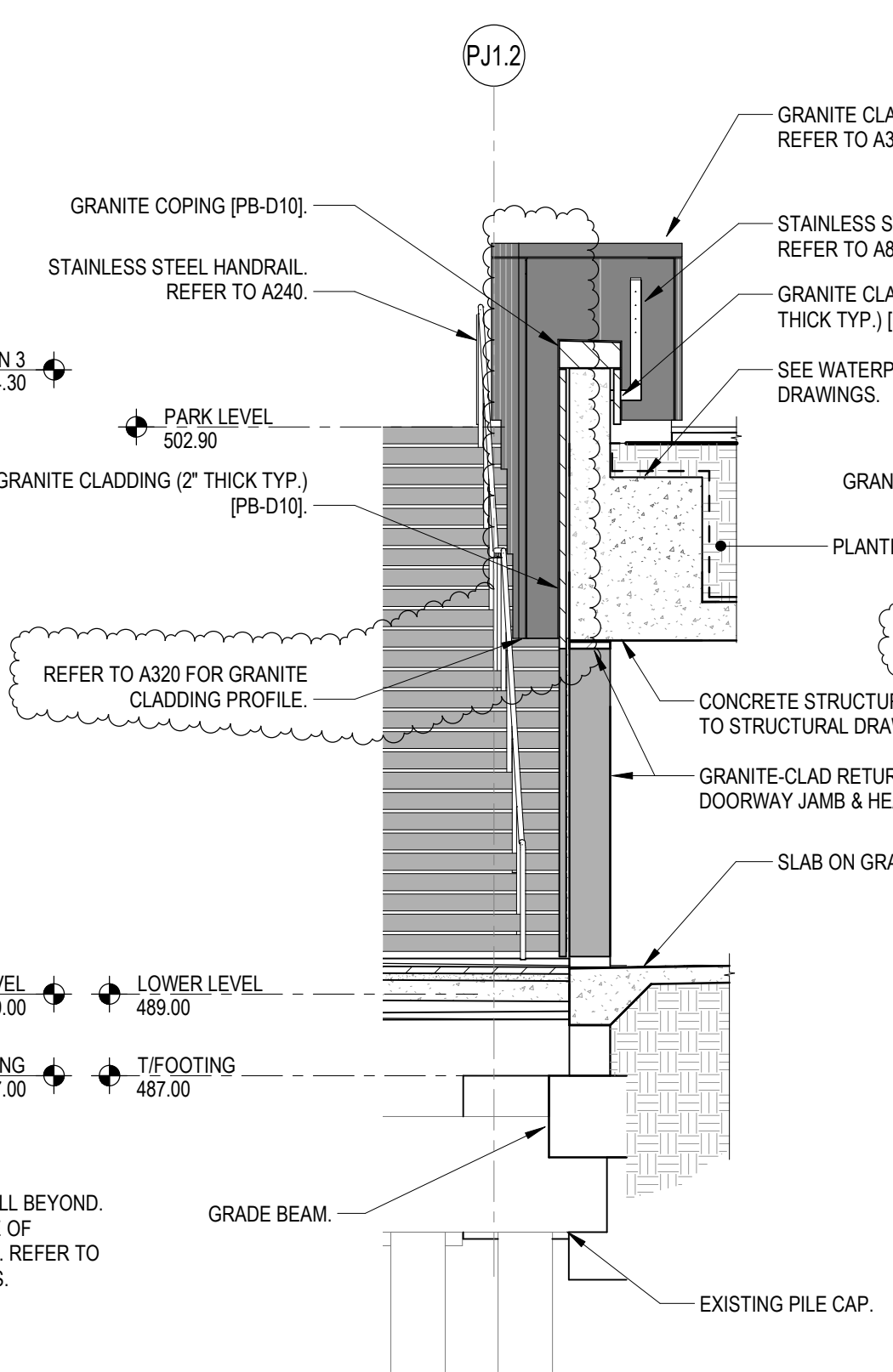
2  
ELM ST. STAIR WALL  
**WALL SECTION**  
A202 1/4" = 1'-0"



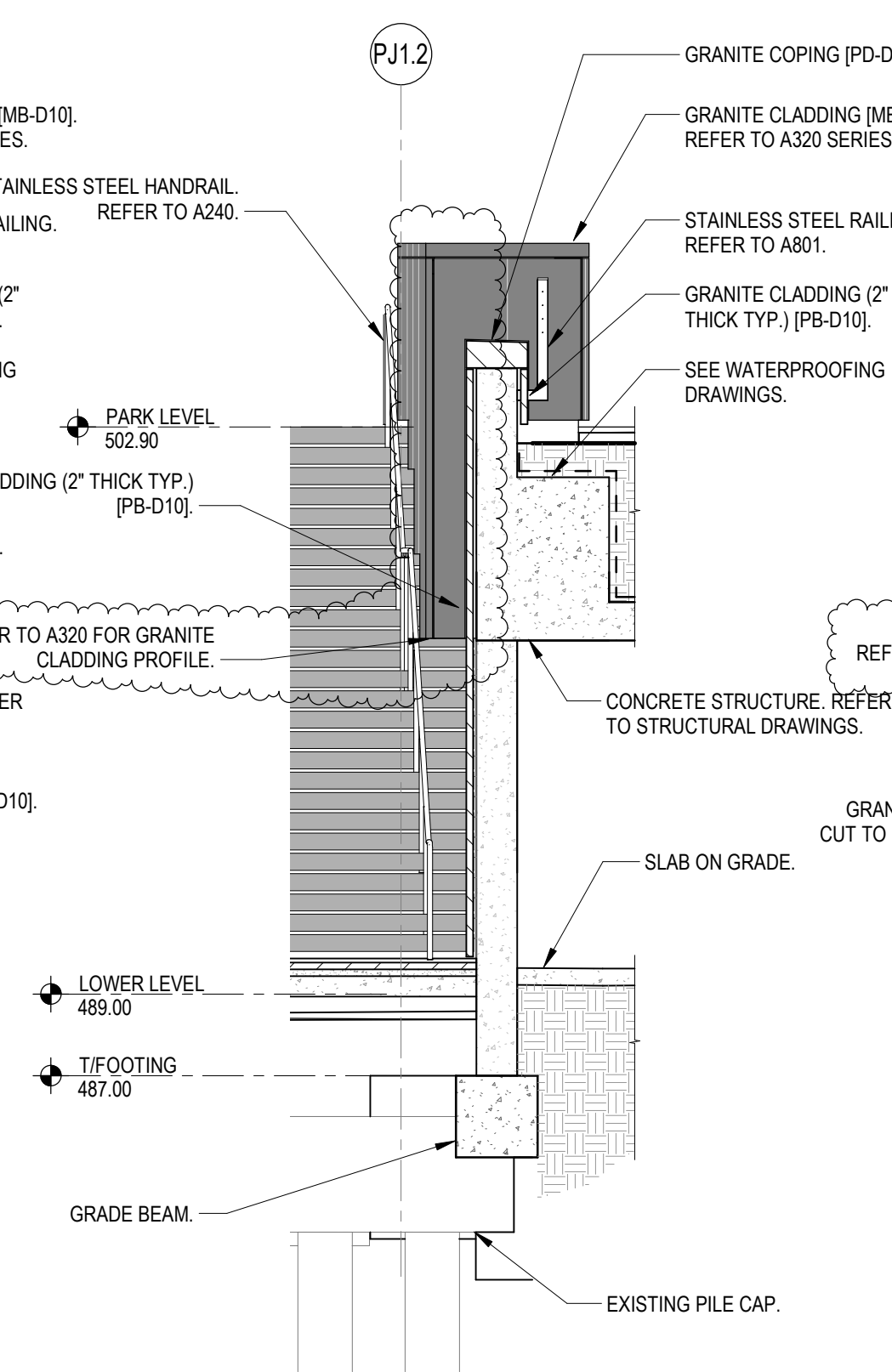
3  
ELM ST. STAIR WALL  
**WALL SECTION**  
A202 1/4" = 1'-0"



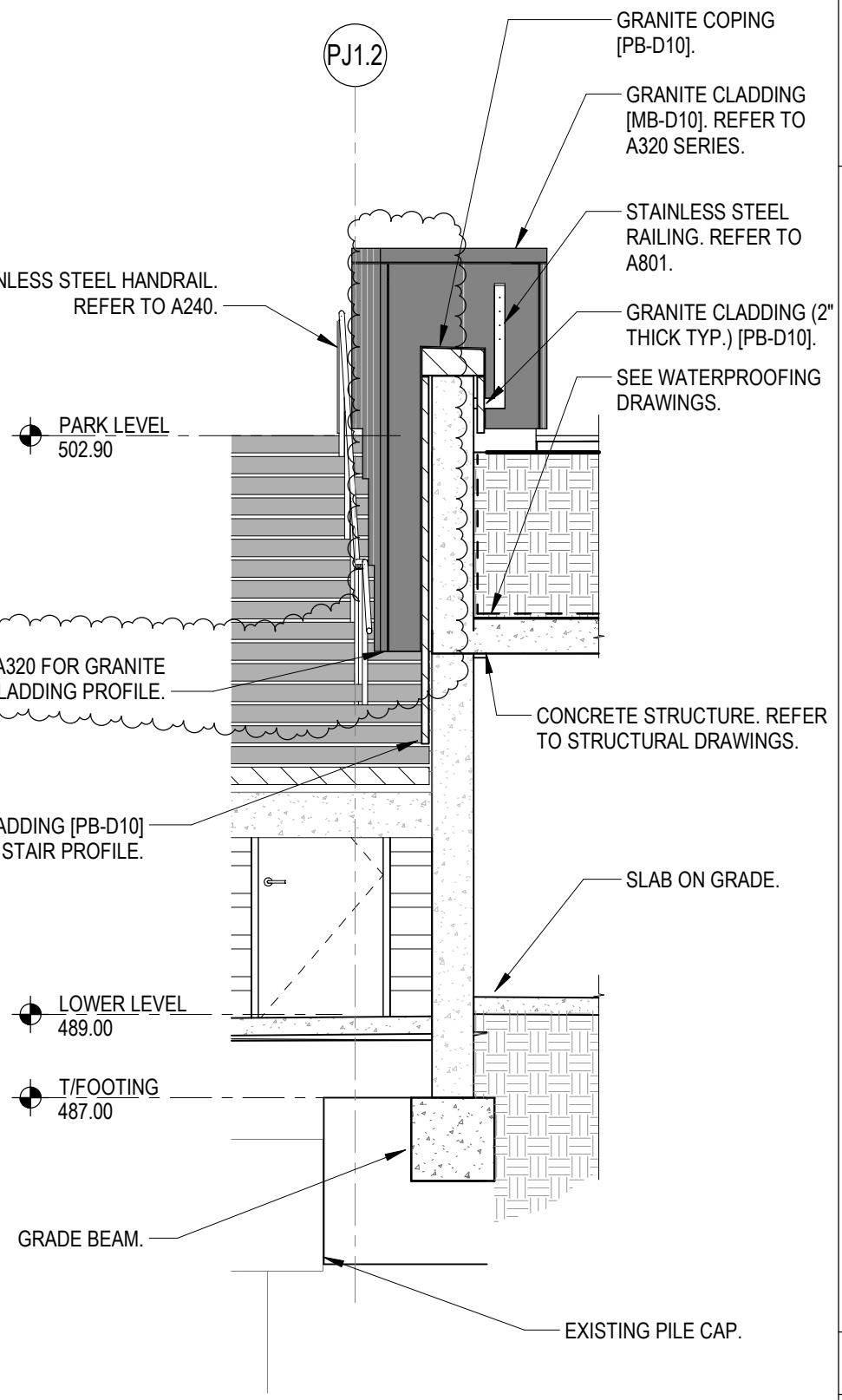
4  
ELM ST. STAIR  
**SOUTH ELEVATION**  
A202 1/4" = 1'-0"



5  
ELM ST. STAIR WALL  
**WALL SECTION**  
A202 1/4" = 1'-0"

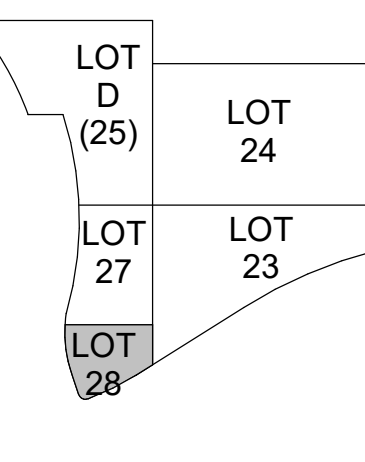


6  
ELM ST. STAIR WALL  
**WALL SECTION**  
A202 1/4" = 1'-0"



7  
ELM ST. STAIR WALL  
**WALL SECTION**  
A202 1/4" = 1'-0"

ISSUE/REVISIONS: ISSUES/REVISIONS (CONTINUED)  
1. 12/17/2021: BPR2 - PARK & GARAGE  
2. 01/13/2022: BPR2 - ADDENDUM #2  
3. 01/26/2022: BPR2 - ADDENDUM #3, #4



PROJECT ARCHITECT  
J.M.H.  
PROJECT MANAGER  
M.S.M.  
PRINCIPAL  
J.M.J.  
CHECKED BY  
M.S.M.



DRAWING TITLE  
ELM ST. STAIR ELEVATIONS &  
SECTIONS

JOB NUMBER DATE  
THP 09090.40 12/17/2021  
DRAWING NUMBER

A202



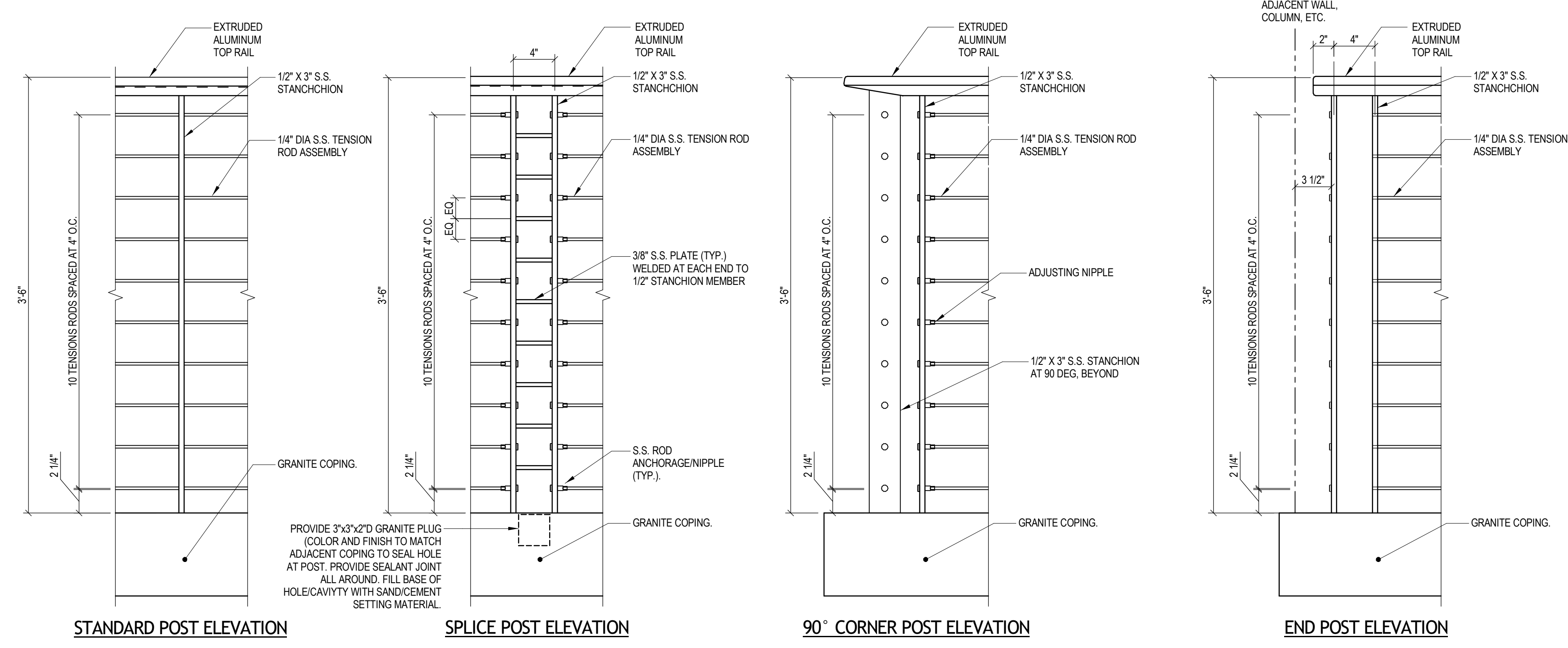
HAMILTON COUNTY  
RIVERFRONT PARKING  
AND INFRASTRUCTURE  
IMPROVEMENTS



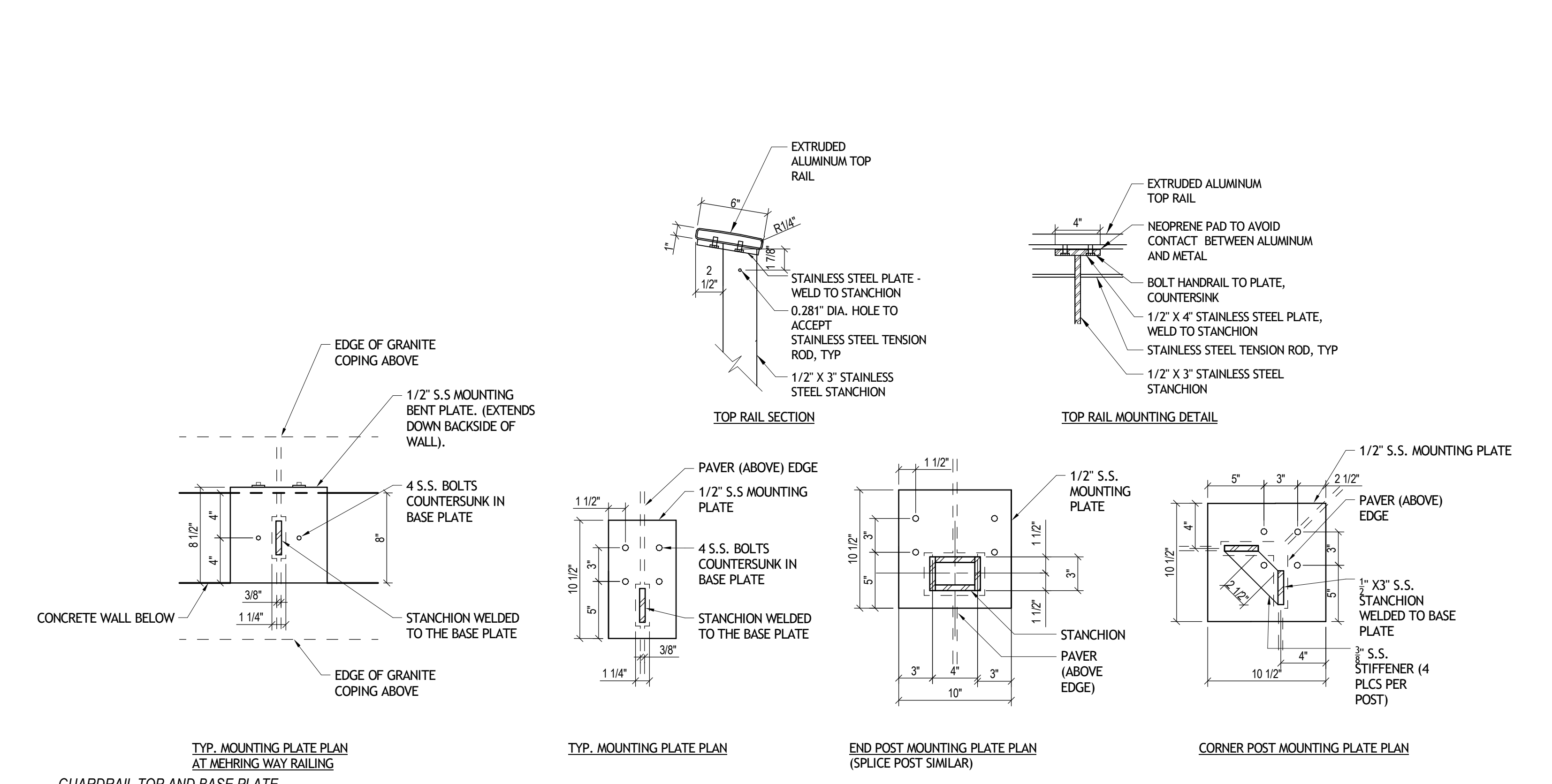
THP Limited  
100 East Eighth Street  
Cincinnati, Ohio 45202

513.241.3222  
THPLTD.com

This document is the product and property of THP Limited. Neither the document nor the information it contains may be copied or reused for other than the specific project for which it was prepared without the written consent of THP Limited.

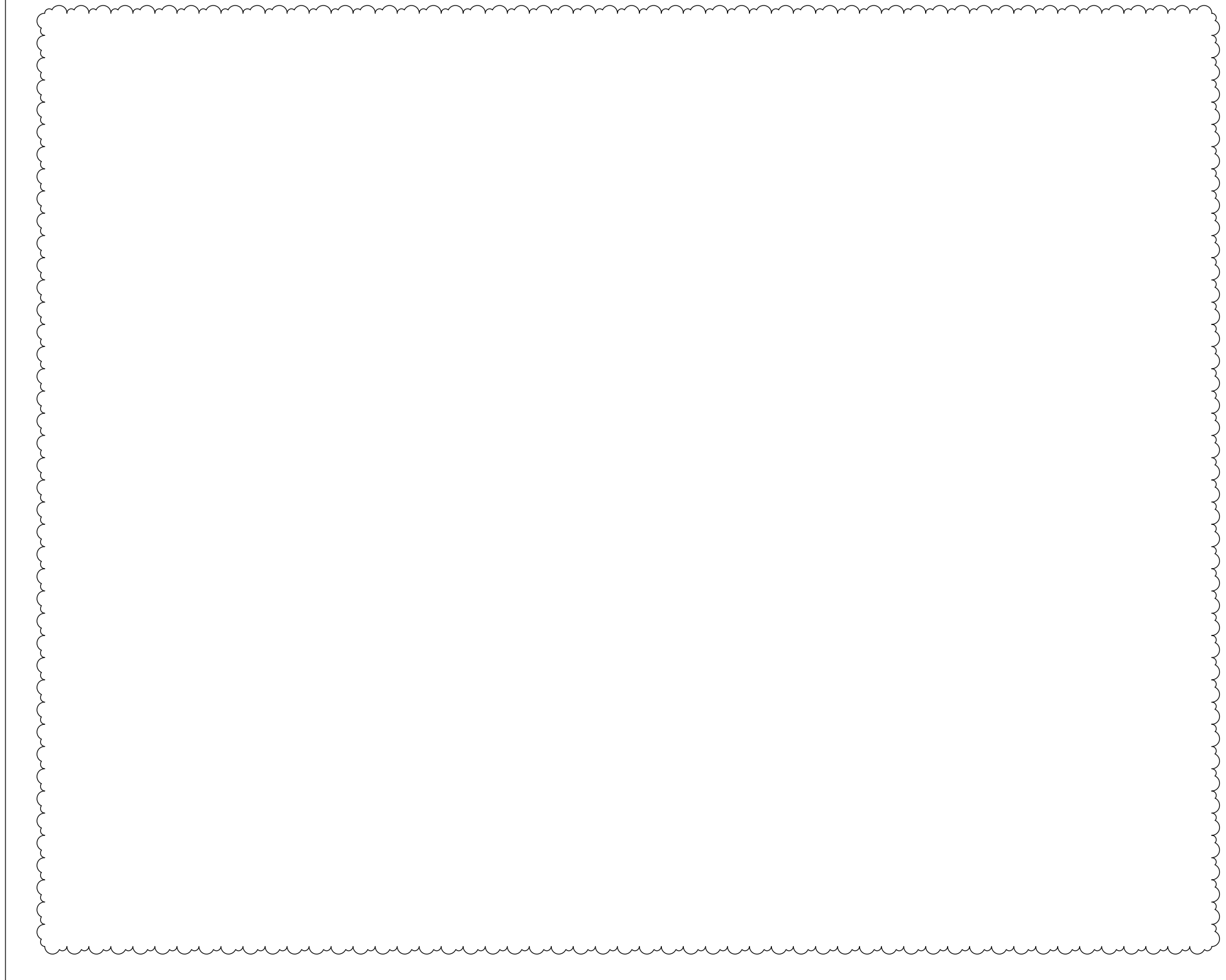


NOTE: STANCHIONS NOT TO EXCEED 5'-0\"/>

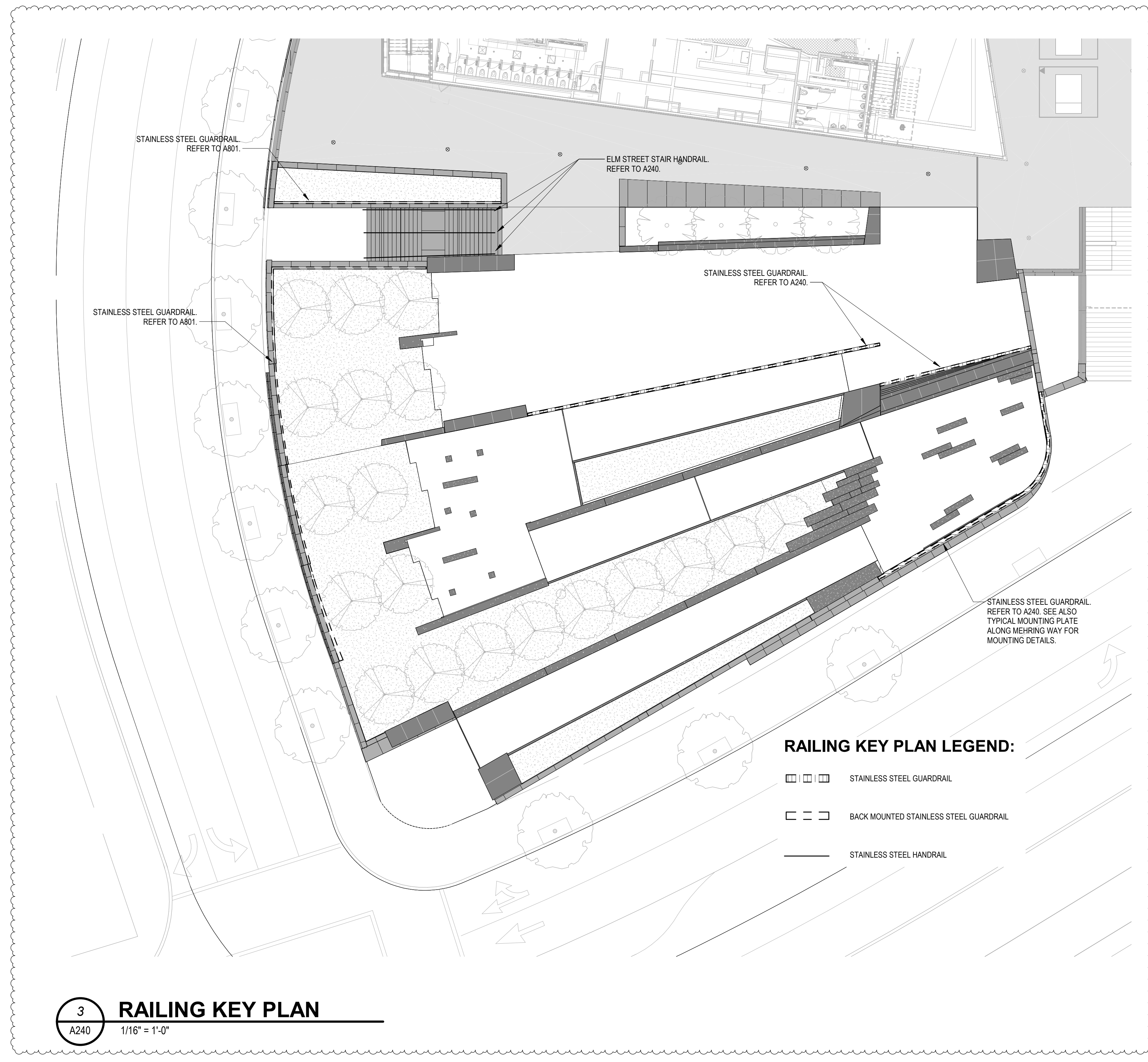


1  
A240  
1 1/2\"/>

2  
A240  
1 1/2\"/>



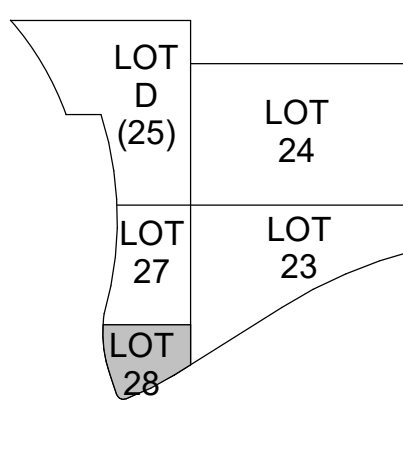
4  
A240  
1 1/2\"/>



3  
A240  
1/16\"/>

ISSUE/REVISIONS (CONTINUED)

1	12/17/2021	BP#2 - PARK & GARAGE
2	01/13/2022	BP#2 - ADDENDUM #2
3	07/26/2022	BP#2 - ADDENDUM #3, #4



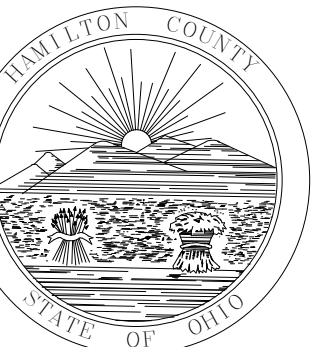
PROJECT ARCHITECT  
J.M.H.  
PROJECT MANAGER  
M.S.M.  
PRINCIPAL  
J.M.J.  
CHECKED BY  
M.S.M.



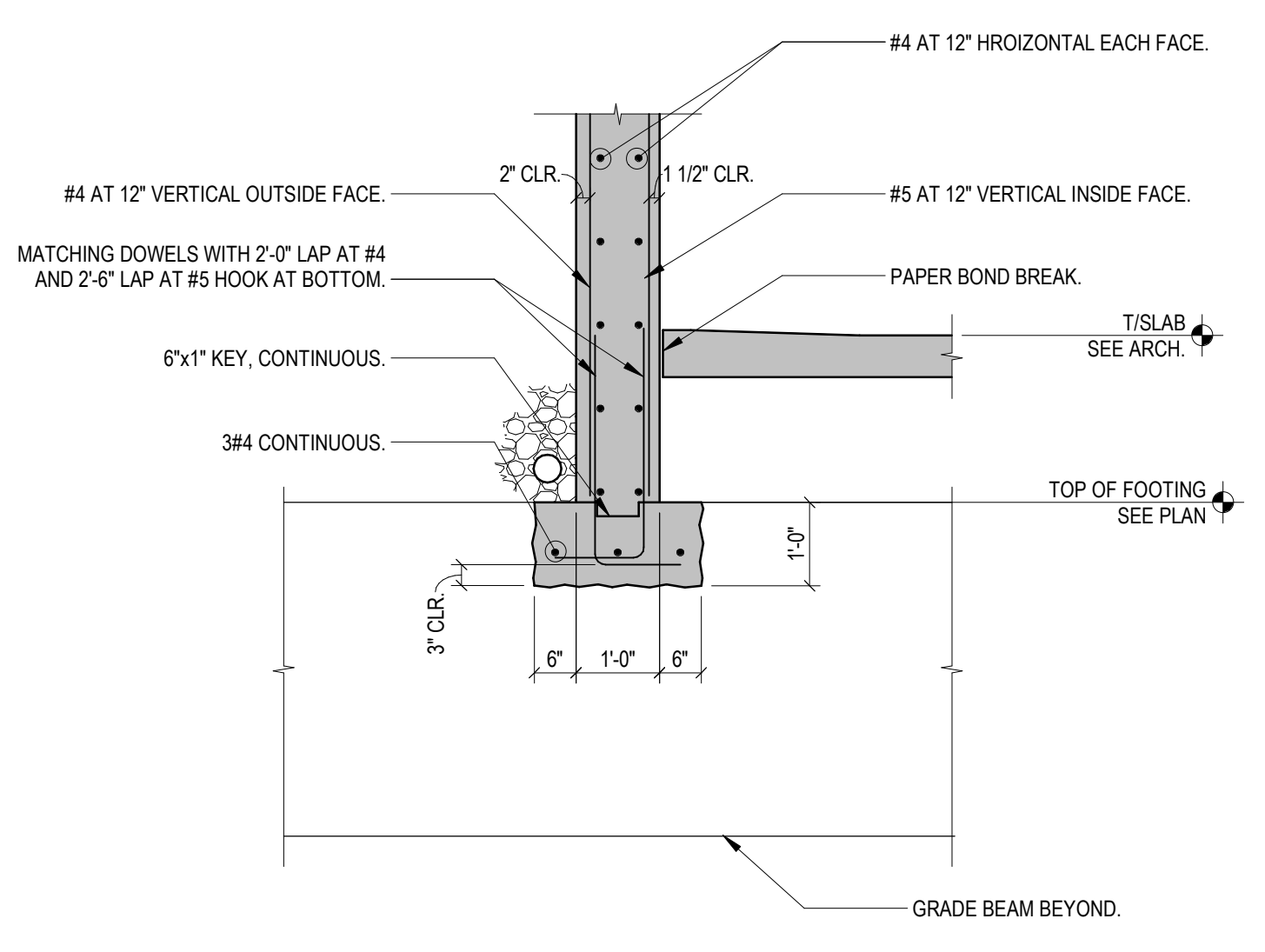
DRAWING TITLE  
RAILING DETAILS

JOB NUMBER  
THP 08090.40  
DATE  
12/17/2021  
DRAWING NUMBER

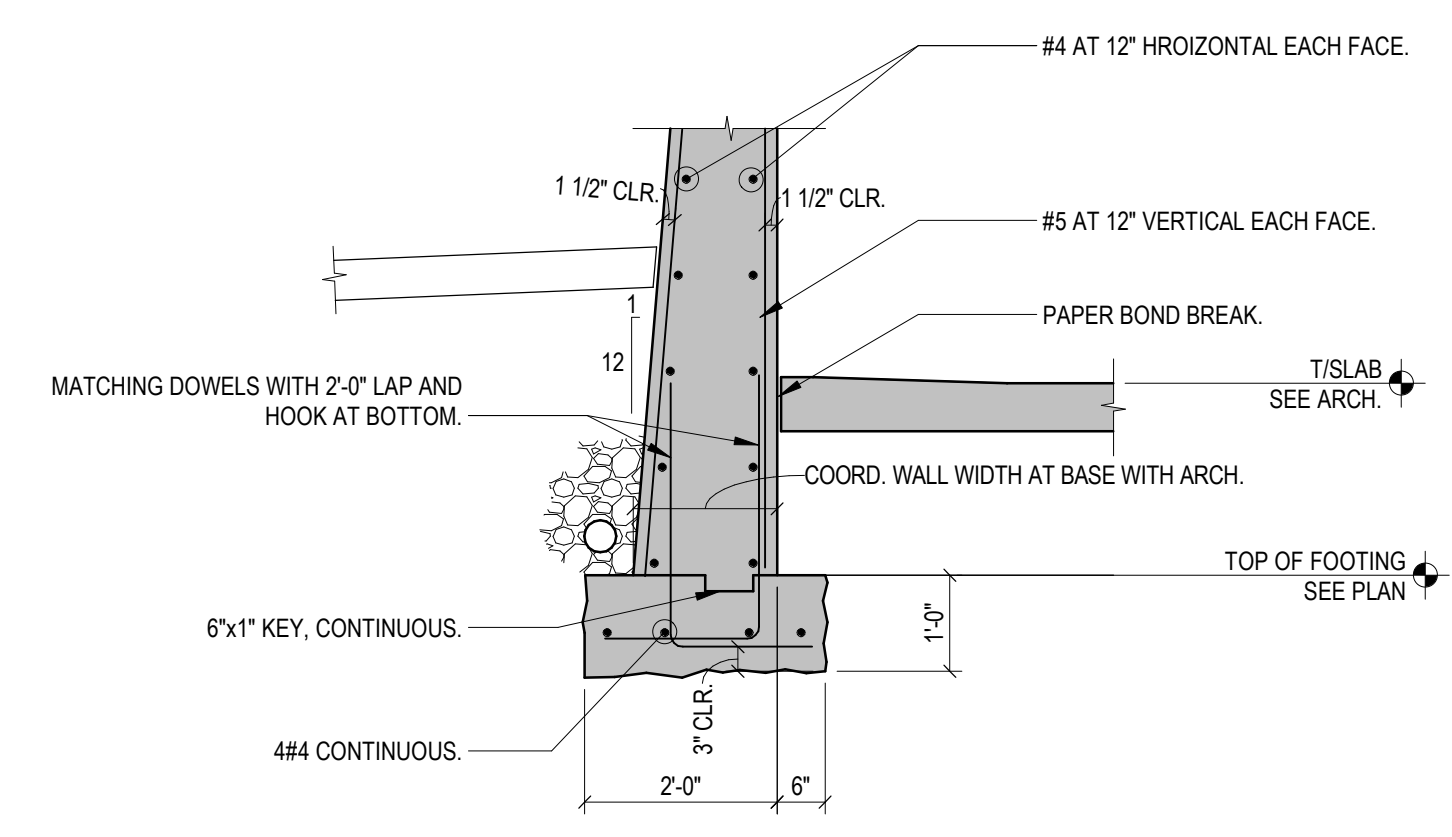
A240



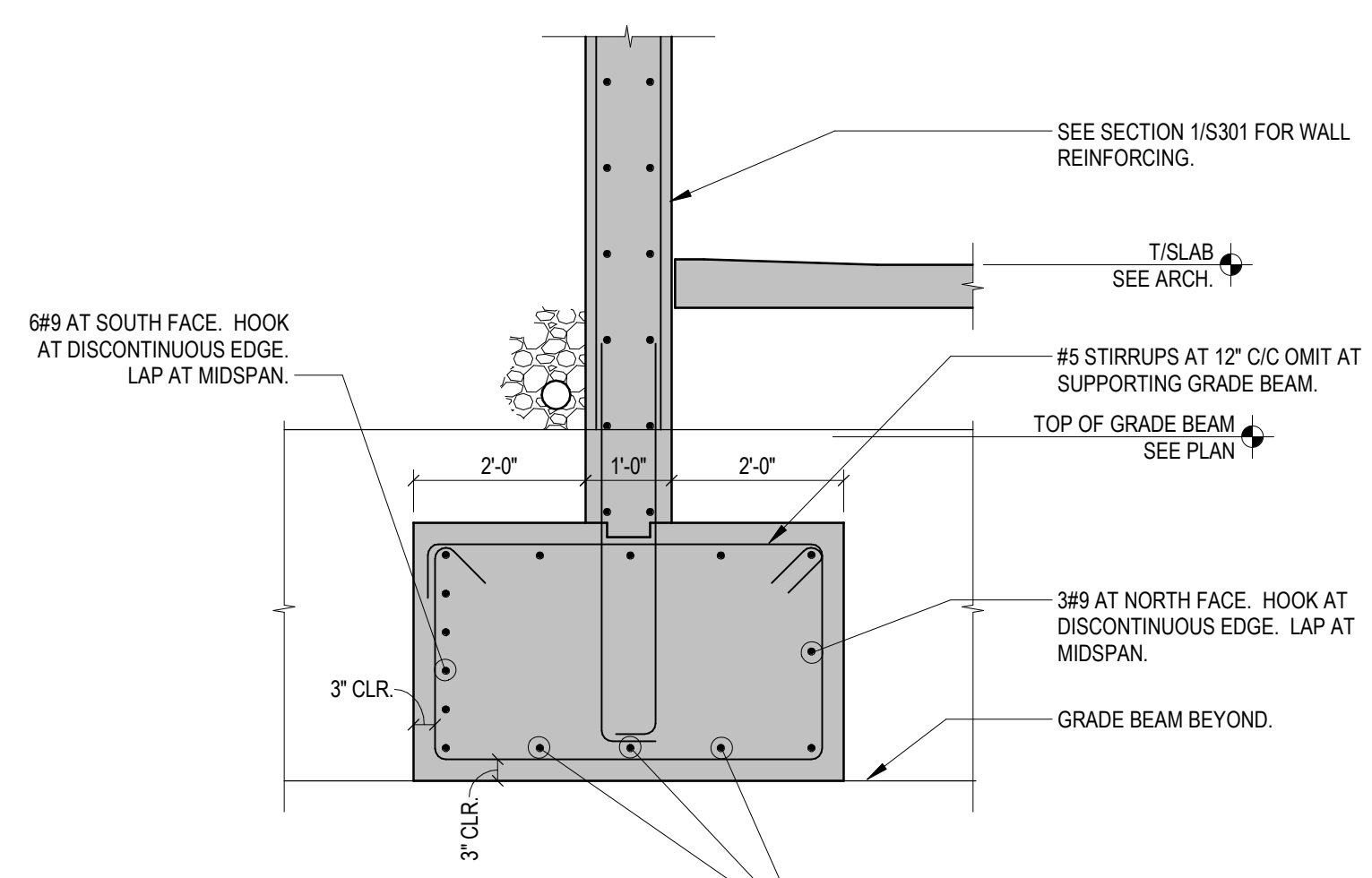
This document is the product and property of THP Limited. Neither the document nor the information it contains may be copied or reused for other than the specific project for which it was prepared without the written consent of THP Limited.



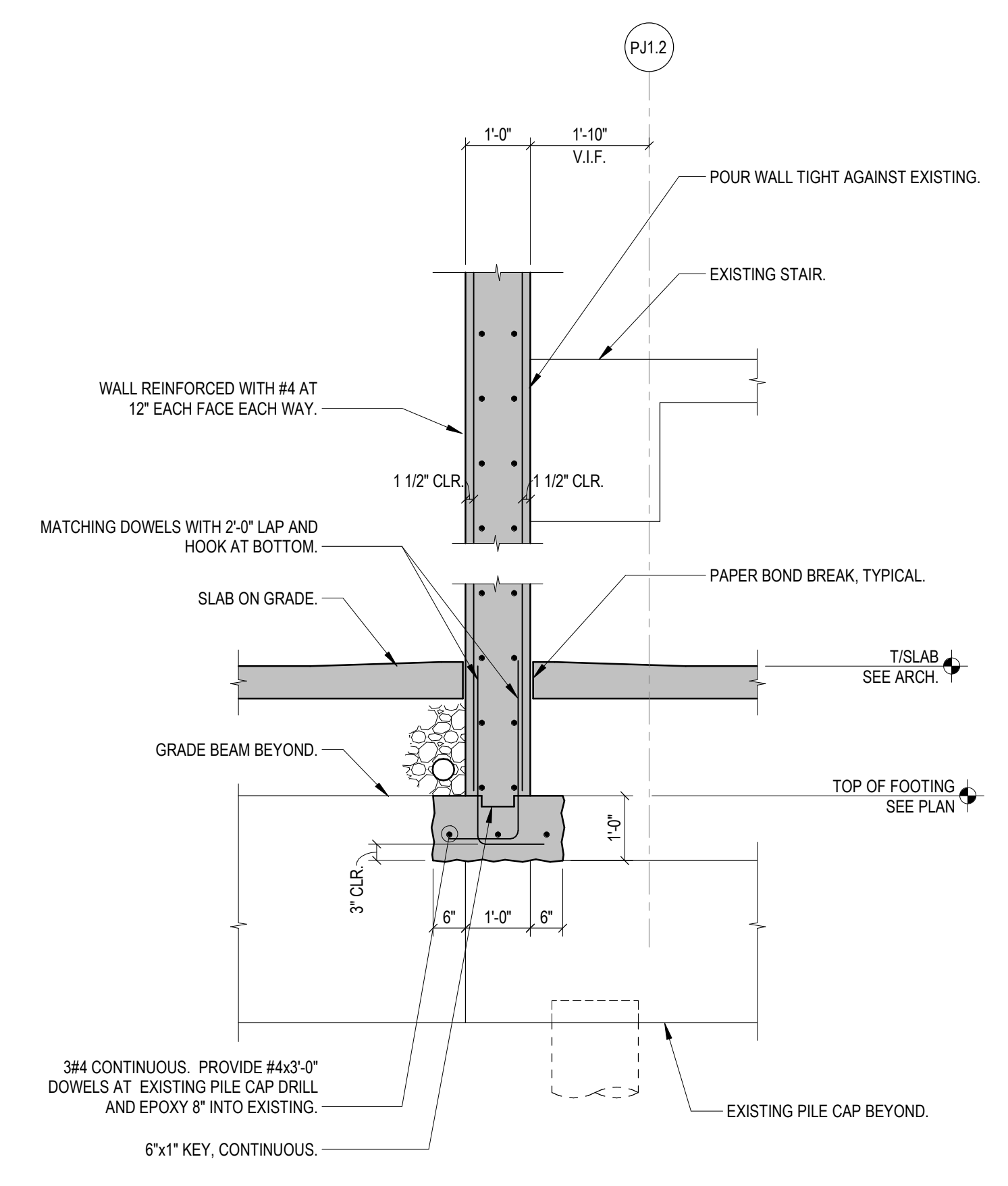
**1 SECTION**  
S201 1/2" = 1'-0"



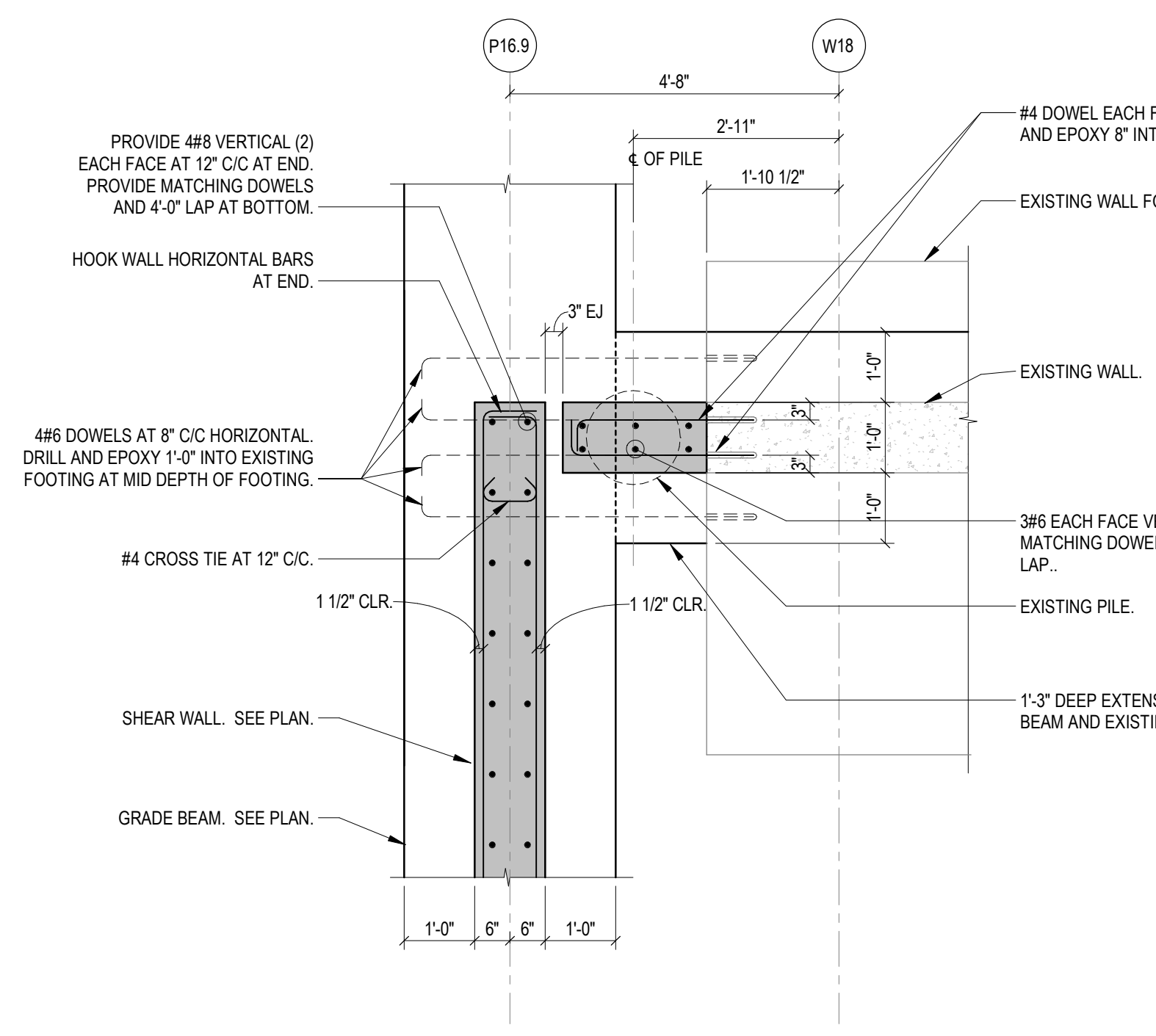
**2 SECTION**  
S201 1/2" = 1'-0"



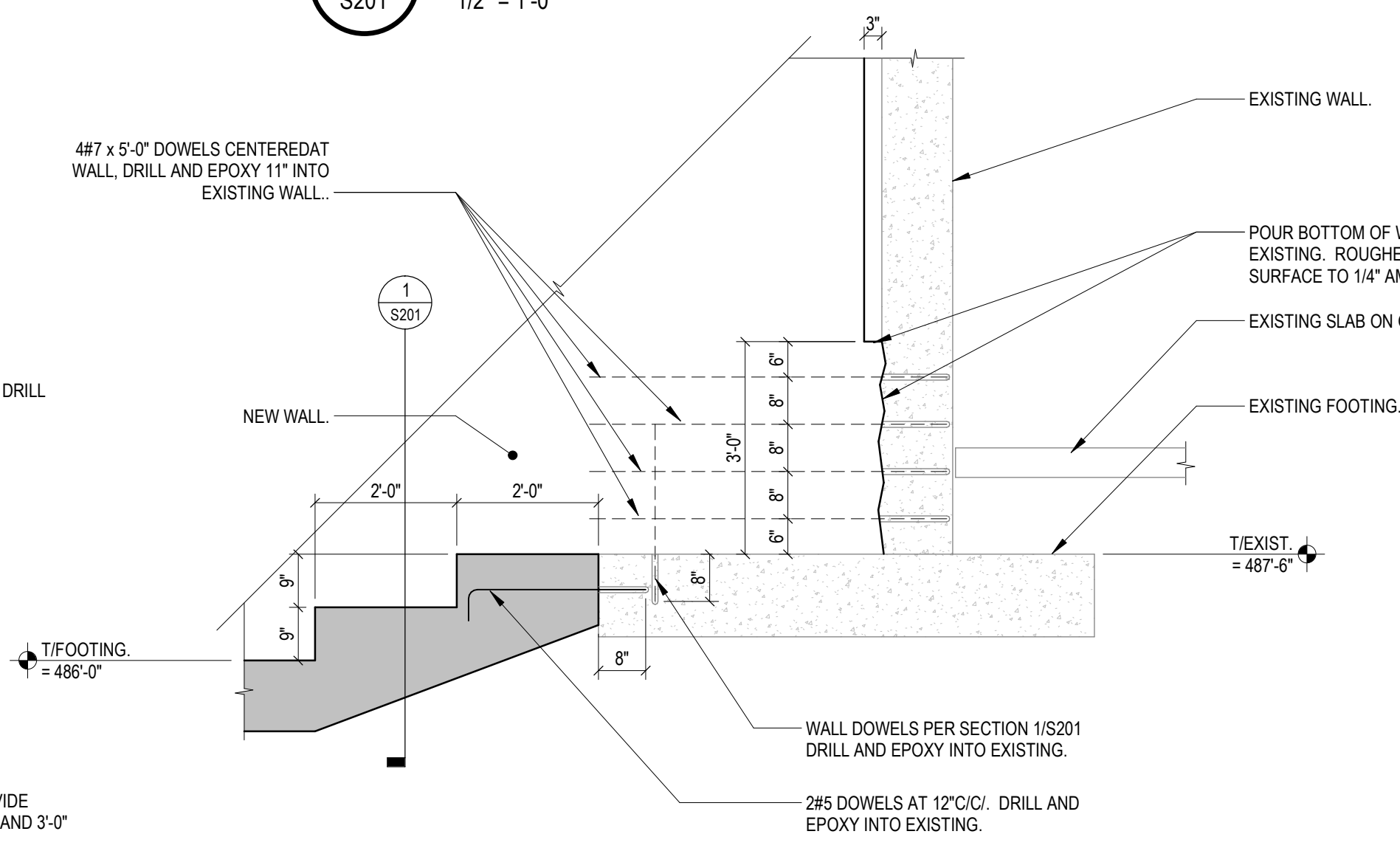
**3 SECTION**  
S201 1/2" = 1'-0"



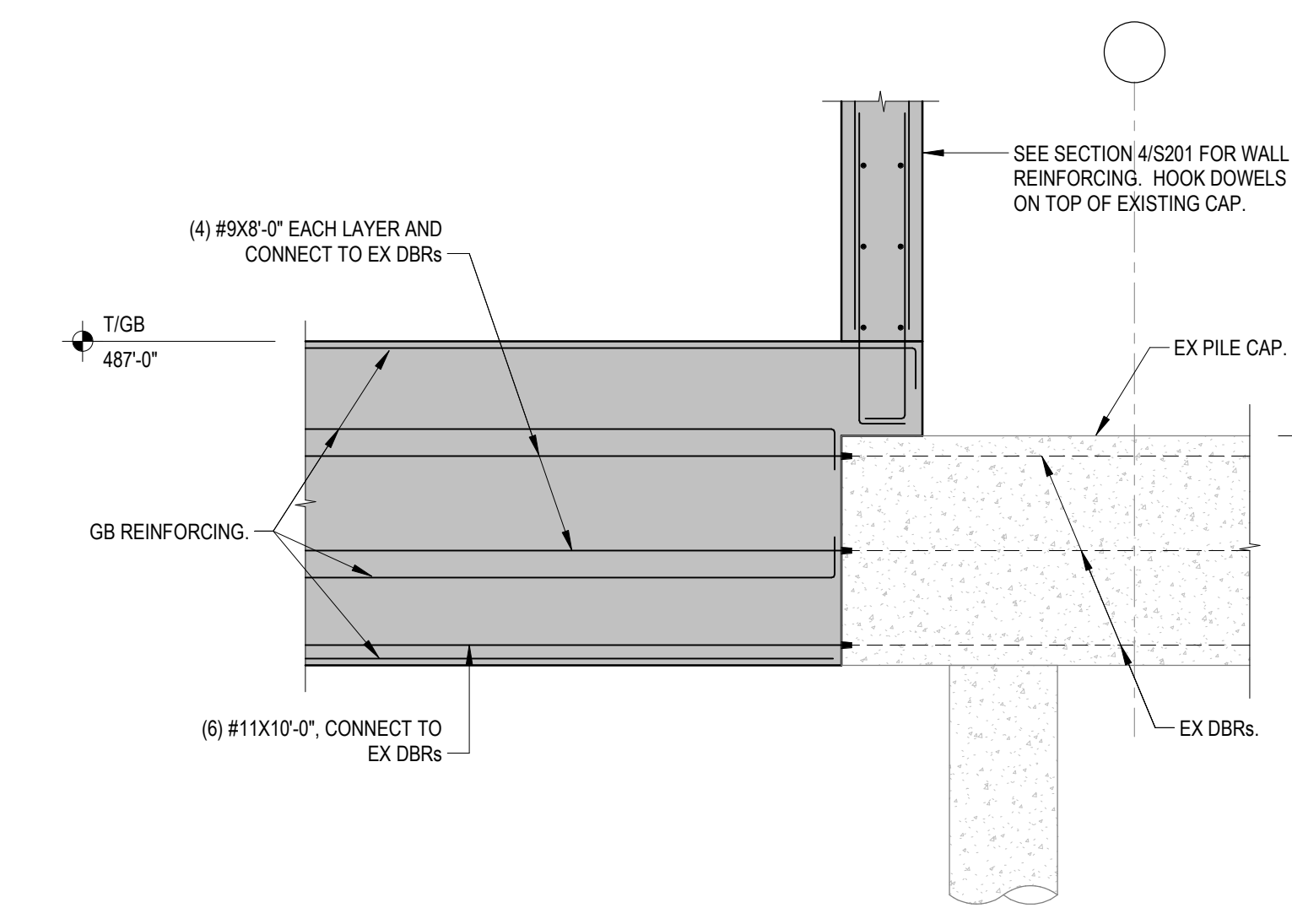
**4 SECTION**  
S201 1/2" = 1'-0"



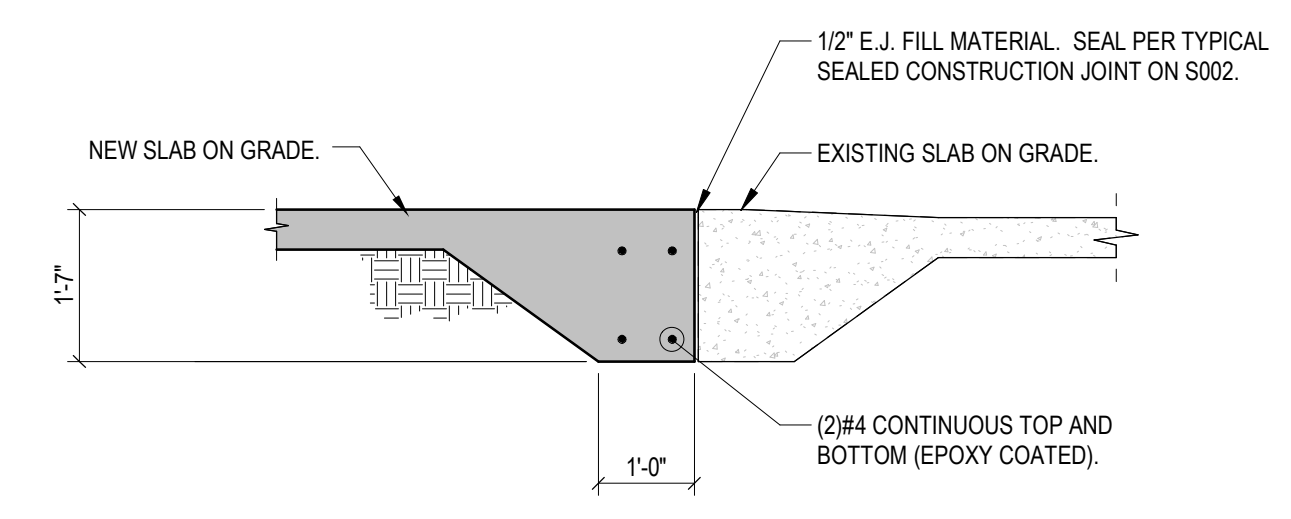
**5 PLAN DETAIL**  
S201 1/2" = 1'-0"



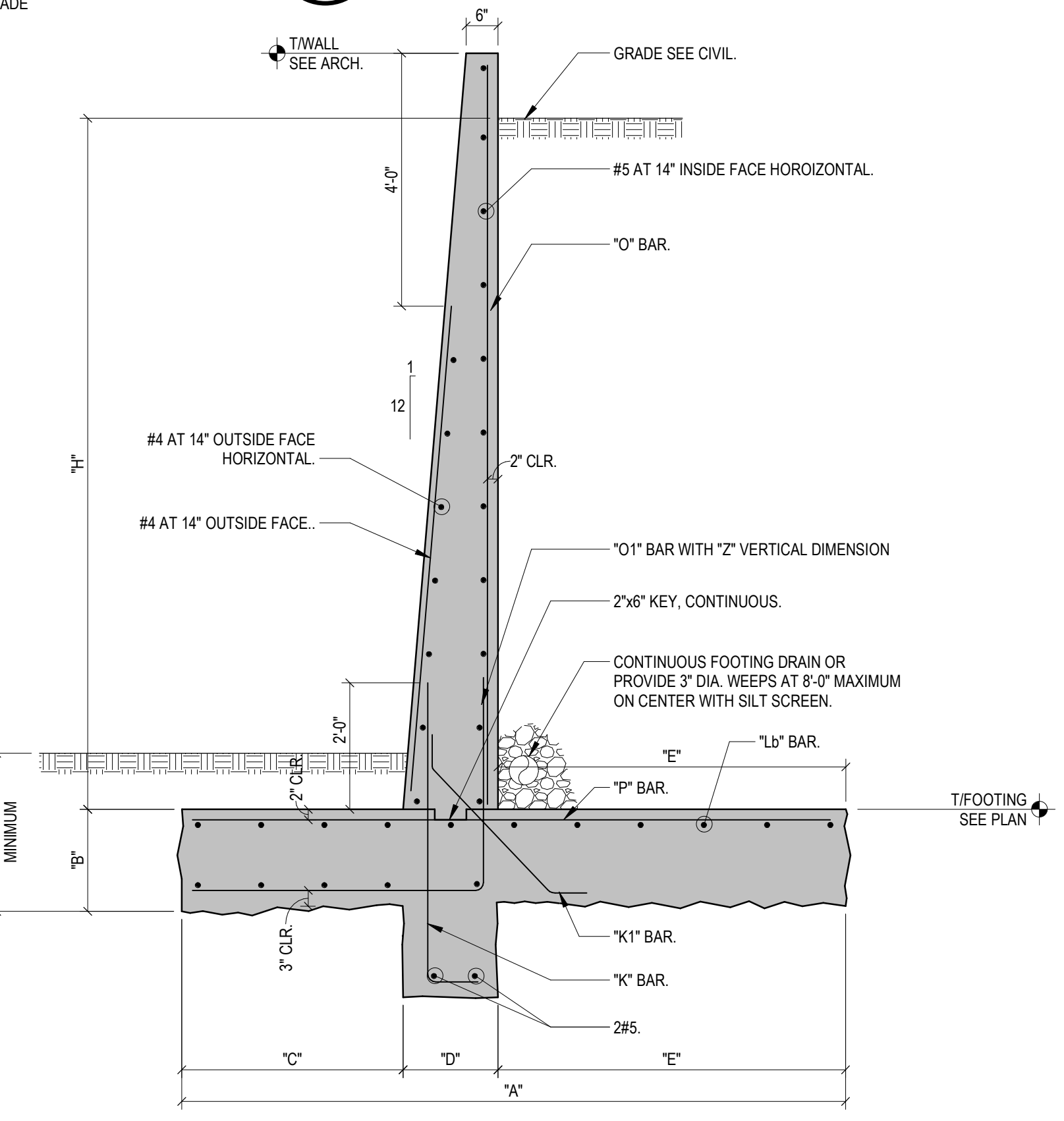
**6 SECTION**  
S201 1/2" = 1'-0"



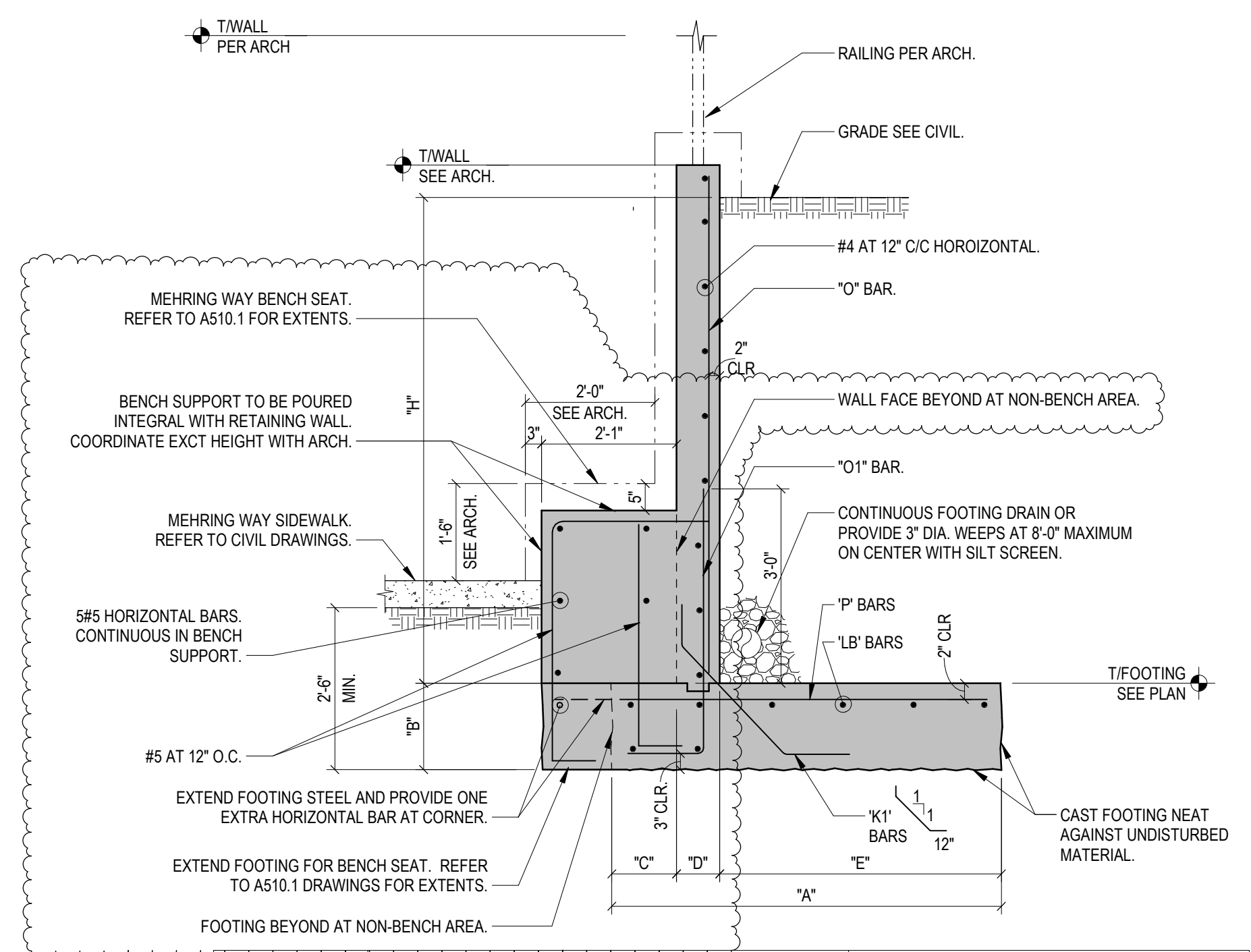
**7 SECTION**  
S201 1/2" = 1'-0"



**8 SECTION**  
S201 1/2" = 1'-0"



**9 SECTION**  
S201 1/2" = 1'-0"

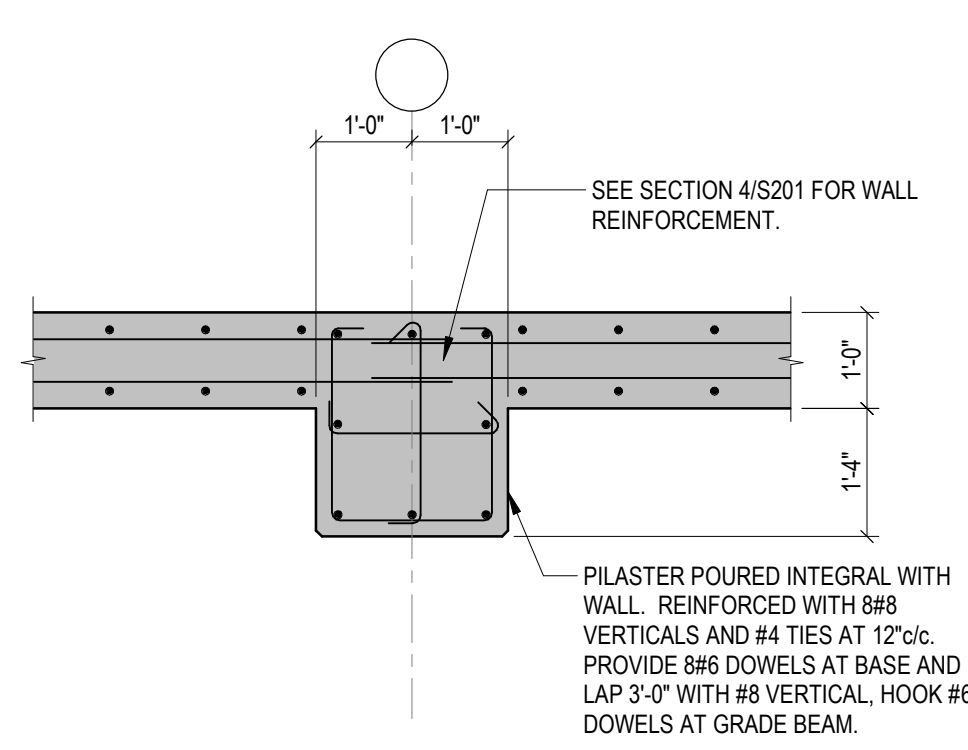


**10 SECTION**  
S201 1/2" = 1'-0"

SECTION	DIMENSION							REINFORCEMENT									
	H	A	B	C	D	E	F	O	O1	P	K	K1	Lb	Z			
TYPE 1	≤13'-0"	10'-6"	1'-6"	3'-6"	1'-6"	5'-6"	2'-0"	#5 AT 10"	#6 AT 10"	#5 AT 10"	#5 AT 12"	#4 AT 10"	10#5 TOP #5 BOT	6'-0"			
TYPE 2	≤11'-0"	8'-6"	1'-6"	2'-0"	1'-6"	5'-0"	1'-0"	#4 AT 10"	#5 AT 10"	#5 AT 10"	#4 AT 12"	#4 AT 10"	8#5 TOP #5 BOT	4'-0"			
TYPE 3	≤9'-0"	6'-6"	1'-0"	1'-6"	1'-0"	4'-0"	1'-0"	#5 AT 12"	#5 AT 12"	#5 AT 12"	#5 AT 16"	#4 AT 16"	8#5 TOP #5 BOT	3'-0"			

SECTION	DIMENSION										REINFORCEMENT									
	H	A	B	C	D	E	O	O1	P	K1	Lb	Z								
TYPE 04	≤8'-0"	6'-0"	1'-0"	1'-0"	0'-8"	4'-4"	#4 AT 9"	#5 AT 9"	#5 AT 12"	#4 AT 16"	6#5 TOP #5 BOT	2#5 BOT								
TYPE 05	≤6'-0"	4'-8"	1'-0"	1'-0"	0'-8"	3'-0"	[1]	#4 AT 12"	#4 AT 12"	#4 AT 16"	6#5 TOP #5 BOT	2#5 BOT								

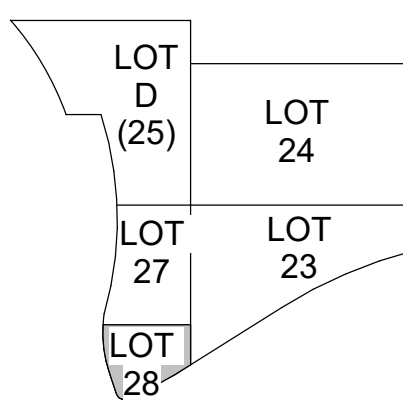
[1] OMIT "O" BAR, EXTEND "O1" TO 2" BELOW TOP OF WALL.



**11 SECTION**  
S201 1/2" = 1'-0"

ISSUE/REVISIONS (CONTINUED)

NO.	DATE	DESCRIPTION
1	11/05/2021	BP#1 - GARAGE FOUNDATIONS AND SITE
2	11/08/2021	50% CONSTRUCTION DOCUMENTS
3	11/10/2021	BP#1 PERMITS SET
4	12/17/2021	BP#2 - PARK & GARAGE
5	01/10/2022	BP#2 - ADDENDUM #1
6	01/15/2022	BP#2 - ADDENDUM #2



TECHNICIAN  
P.A.B.  
PROJECT MANAGER  
M.S.M.  
PRINCIPAL  
J.M.J.  
CHECKED BY  
J.V.



DRAWING TITLE  
FOUNDATION DETAILS

JOB NUMBER  
98090.40  
DATE  
12/17/2021  
DRAWING NUMBER

S201