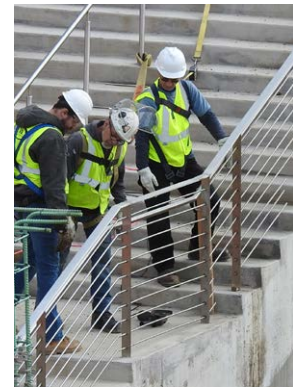




PROGRESS REPORT: Q2 2022

# THE BANKS





# THE BANKS PROJECT: Q2 2022 PROGRESS

April, May, and June were active months at The Banks!

- Construction on Lot 19, The Filson Queen City Kitchen & Bar, continued this quarter.
- Crews focused on Lot 28 construction for the permanent home for the Cincinnati Black Music Walk of Fame, in anticipation of the induction ceremony for four new honorees on July 23.
- Smale Riverfront Park marked its 10th year.
- Frost Factory's new space in the Radius building opened in late June.

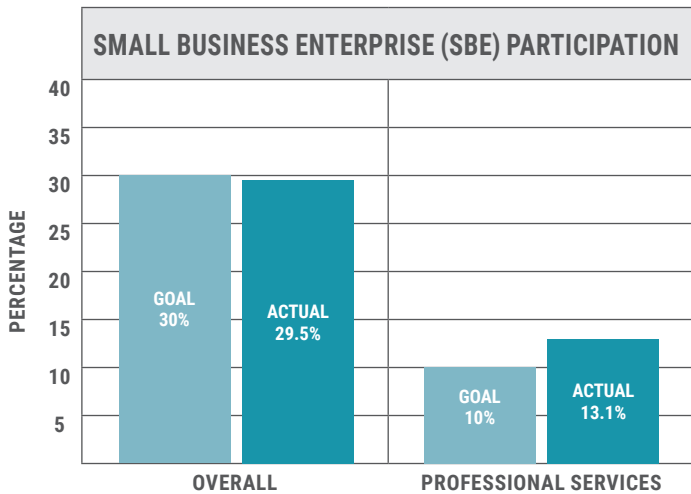
**COVER—Upper left:** Progress on The Filson Queen City Kitchen & Bar continued through June. **Upper right:** Smale Riverfront Park celebrated its 10th year in May. **Main photo:** Workers execute concrete pour of a wall on Lot 28, site of the Cincinnati Black Music Walk of Fame, under construction.

**THIS PAGE—Left:** The GE Building serves as a backdrop for The Filson Queen City Kitchen & Bar. **Center:** Fans enjoy the block party on Opening Day for the Cincinnati Reds. **Right:** Workers install railings on stairs along the Cincinnati Black Music Walk of Fame, on Lot 28.

# PROJECT PILLARS

## ECONOMIC INCLUSION

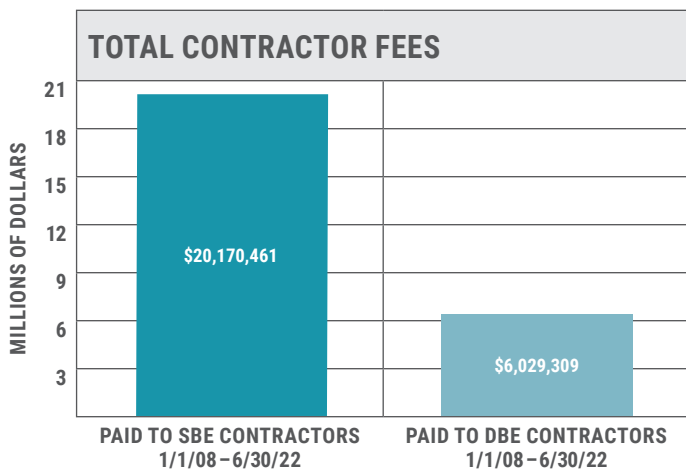
Phase I, II, IIIA, IIIB and IIIC Small Business Enterprise (SBE) participation 1/1/08 through 6/30/22.



Phase I, II, IIIA and IIIB Disadvantaged Business Enterprise (DBE)

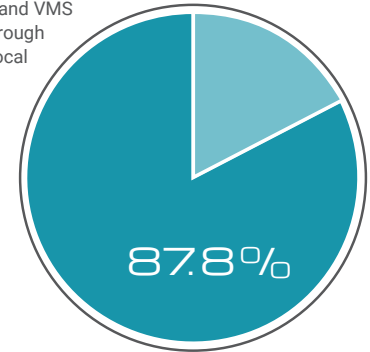
Goal/participation varied by project, between 4% and 9%.

Money paid to SBE and DBE contractors through varying dates.



Percentage of workforce living within the 26-county Consolidated Metropolitan Statistical Area\*

\* Phase I, II, IIIA, IIIB, IIIC, and VMS Phase II from 1/1/08 through 5/31/22. There are no local residency participation goals for the project.

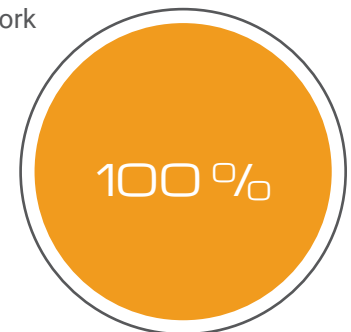


Combined Minority and Women Workforce Participation 1/1/22 through 5/31/22 for Phase IIIC

Female: 1.82%  
Minority: 22.97%

## SCHEDULE

All Public Parties work is on schedule for 2022-2023.



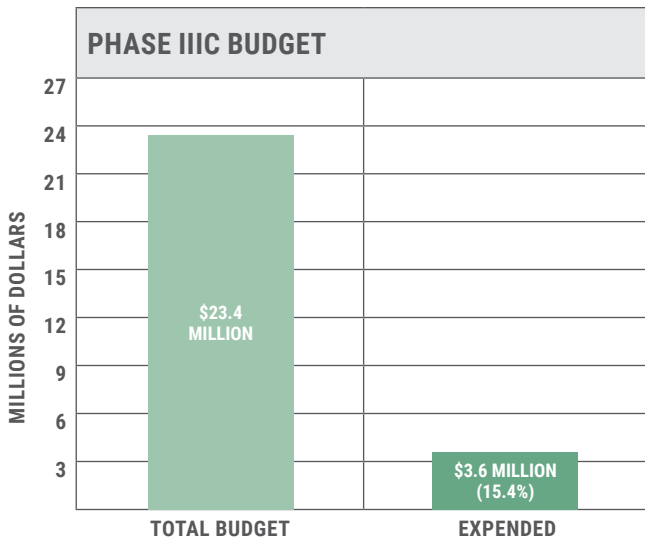
Additional Economic Inclusion information: <https://thebankspublicpartnership.com/wp-content/uploads/economic-inclusion-2022-q2.pdf>



# PROJECT PILLARS

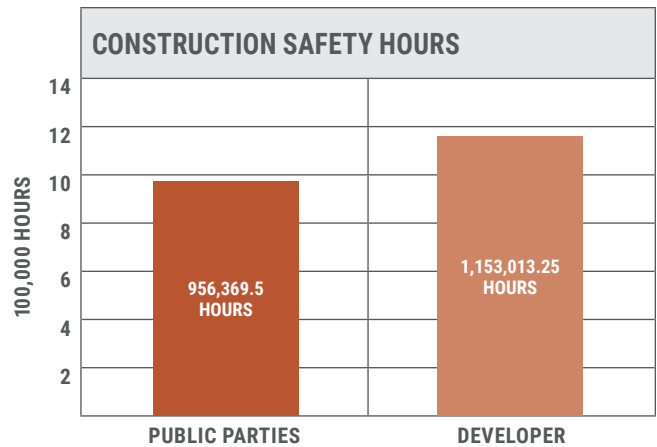
## BUDGET

The Public Parties project work remained within budget.



## SAFETY

Public Parties construction safety hours for all phases from 1/1/08 through 6/30/22.



Workers enjoy a “safety lunch” break, celebrating exemplary safety record of no-lost-time incidents on Lot 28.

Additional Budget information: <https://thebankspublicpartnership.com/wp-content/uploads/budget-2022-q2.pdf>





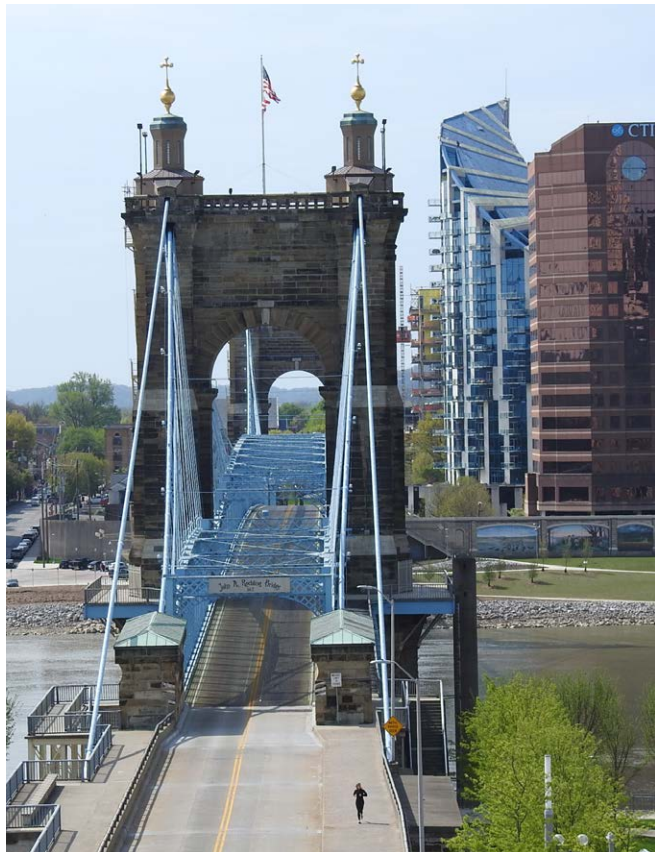
Cincinnati Parks celebrates Earth Day in April at Smale Riverfront Park.



The Women's Garden at Smale Riverfront Park is a signature space in this award-winning, decade-old public greenspace.



Rosie Red celebrates Kids Opening Day in April, along with the fans!

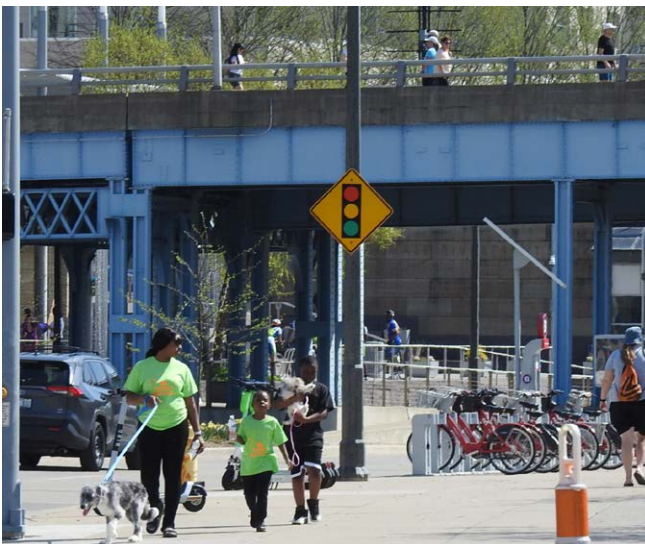


Roebling Bridge reopens to vehicular traffic in April.





Workers orchestrate a slab-on-grade concrete pour at the future home of the Cincinnati Black Music Walk of Fame (Lot 28).



Visitors take in the sights along the Ohio River Trail.



Work continued in April to complete exterior structure of The Filson, on Lot 19.





Runners, walkers, sponsors, and supporters party on the Smale Riverfront Park lawn after the Flying Pig Marathon events in May.



Variable Message Signage directs concert-goers to nearby parking off Mehring Way.



Smale Riverfront Park visitors enjoy the drum installation on a summer-like afternoon.





One of Smale Riverfront Park's water features draws a crowd on a warm May afternoon.



The process of hiring staff for The Filson gets underway in May.



JUNE



Streetcar returned to full service in late June, after a temporary shutdown of The Banks/OTR loop.

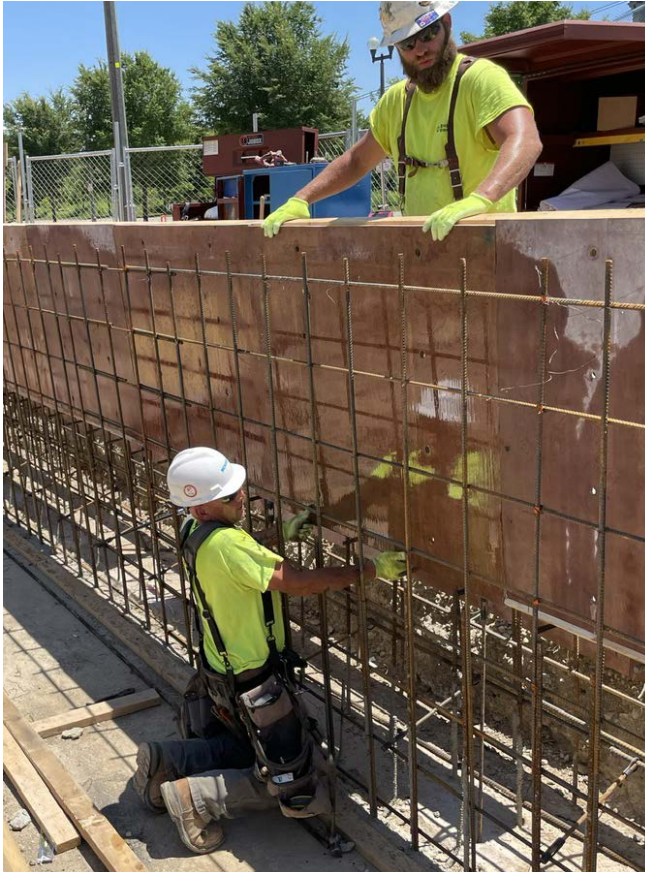


Smale Riverfront Park spraygrounds are a perfect way to cool off!

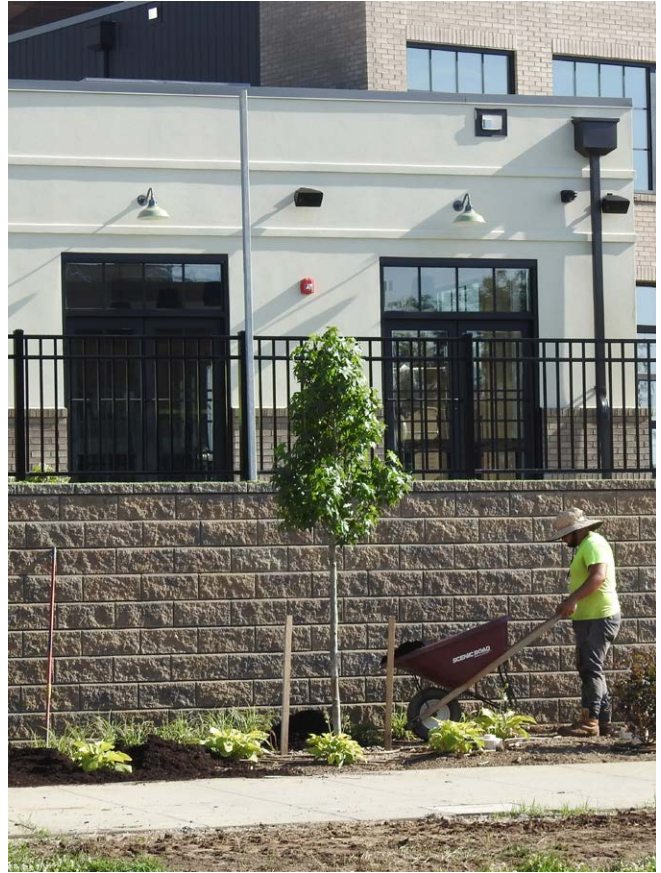


Frost Factory opens its doors on West Freedom Way.

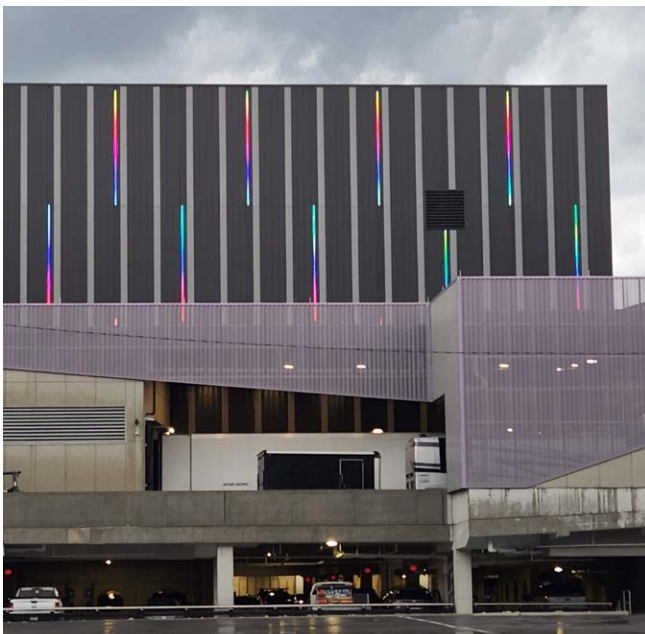




Workers prepare rebar for a concrete wall in Lot 28.



Worker mulches new landscaping around The Filson on Lot 19.



Brady Music Center sports Pride colors in June.



Patrons enjoy the Rosenberg Swings at Smale Park near the Castellini Esplanade and picnic area.



# COMMUNICATIONS



1,658  
Followers



34  
Tweets



11,400  
Impressions\*



321  
Engagements†

\*Impressions equals the number of times users saw the tweet on Twitter.

†Engagements is the total number of times users have interacted with a tweet, including retweets, replies, follows, and likes.

@IBackTheBanks

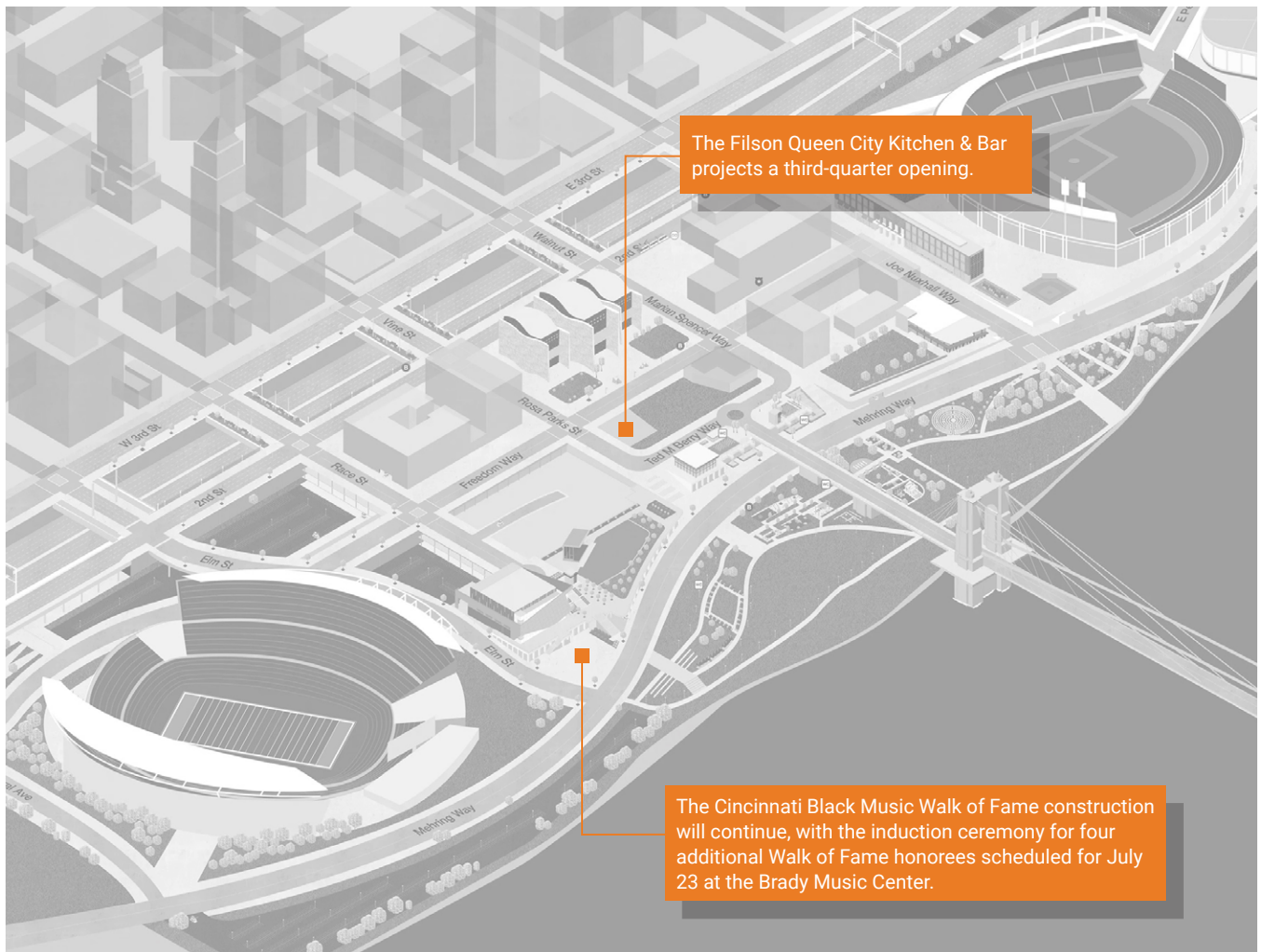


WWW

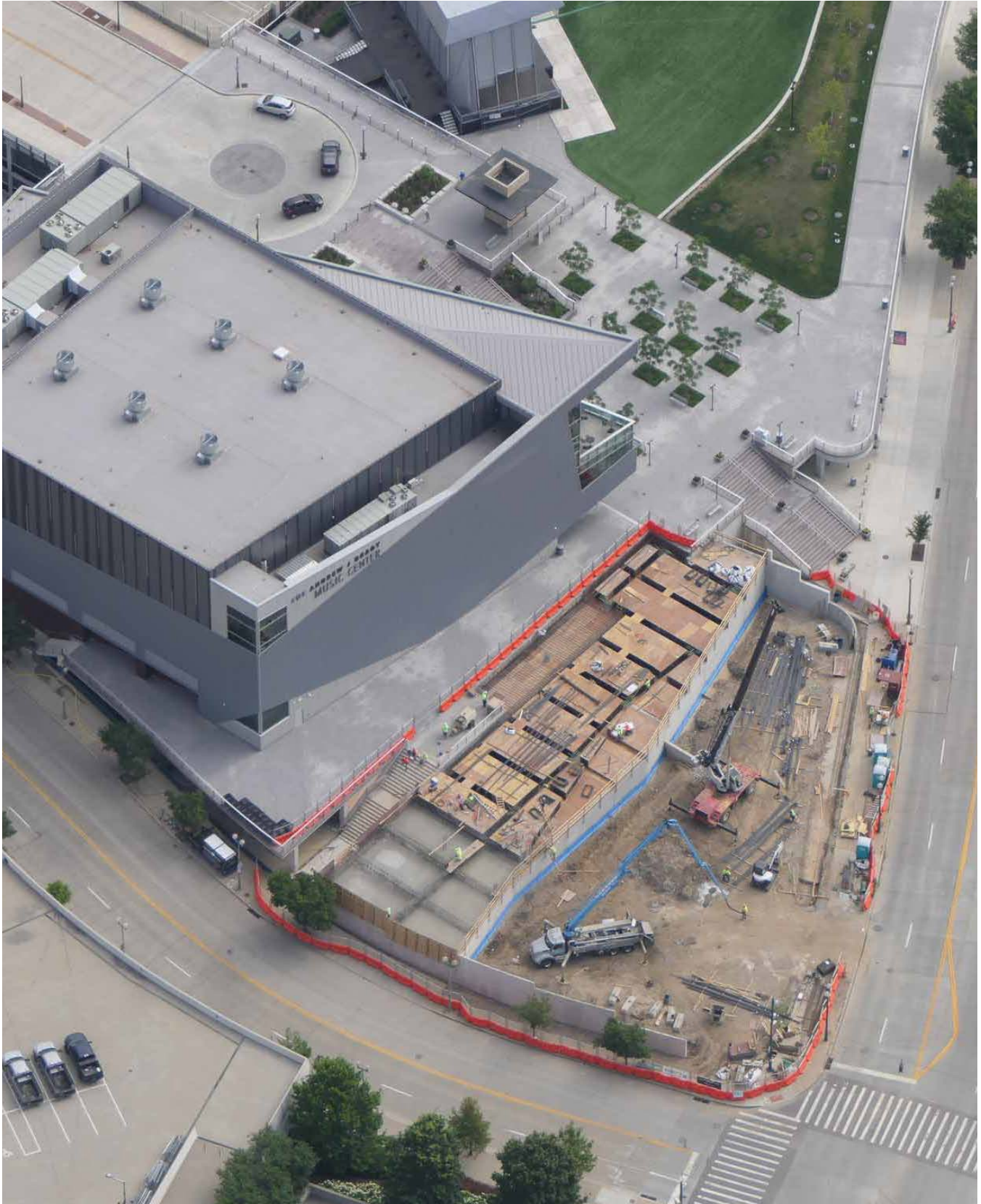
- TOTAL VISITOR SESSIONS: **4,292**
- AVERAGE MONTHLY SESSIONS: **1,431**
- TOTAL PAGE VIEWS: **6,603**
- MONTHLY PARKING PAGE VIEWS: **1,030**
- AVERAGE DURATION: **1:34 minutes**

Additional Media information: <https://thebankspublicpartnership.com/wp-content/uploads/media-summary-2022-q2.pdf>

# WHAT'S NEXT







Aerial of Lot 28 and Brady Music Center.





For more information:  
Phil Beck, AIA, LEED AP  
Project Executive  
The Banks Project  
(513) 946 - 4434



The National Underground Railroad Freedom Center anchors Freedom Way between Marian Spencer Way to the east and Rosa Parks Street to the west.

[www.thebankspublicpartnership.com](http://www.thebankspublicpartnership.com)