



# The Banks Monthly Report: February 2014

Public Parties construction work continued on Second Street and on Freedom Way. Smale Riverfront Park phases 3, 4 and 5 continued to take shape during February which was another month with changing weather conditions to challenge work crews in the field.

# PUBLIC PARTIES CONSTRUCTION

## Central Riverfront Garage

- Crews continue to work in and around the garage on cameras and security phones.

## Second Street

- Work has picked up on the waterproofing and modifications to Second Street and the Main Street approach.

## Freedom Way

- Work on Freedom Way between Rosa Parks Street and Walnut Street has begun, with daily lane closures.



Freedom Way demolition.



Second Street north sidewalk utility work.



# DEVELOPER

The developer continued planning development of Phase IIA, the block bounded by Race, Vine, Second Street, and Freedom Way.

Phase IIA rendering.





## ECONOMIC INCLUSION

Disadvantaged Business Enterprise (DBE) participation on BP12-2 is 17.5% (vs. 6.0% goal). A total of \$859,615 has been paid to BP12-2 DBE contractors. BP12-1 participation is 3.9% (vs. 9% goal) with 50% of the work completed (as of January 31, 2014). A total of \$72,511 has been paid to BP12-1 DBE contractors.

Small Business Enterprise (SBE) participation for professional services is 17.9% (vs. 10% goal) through January 31, 2014.

Minority workforce participation is 16.25% (including minority female hours). Total female participation is 2.05%. Combined minority and women workforce participation is 17.54% as reported by hours for September 1, 2008 through January 31, 2014.

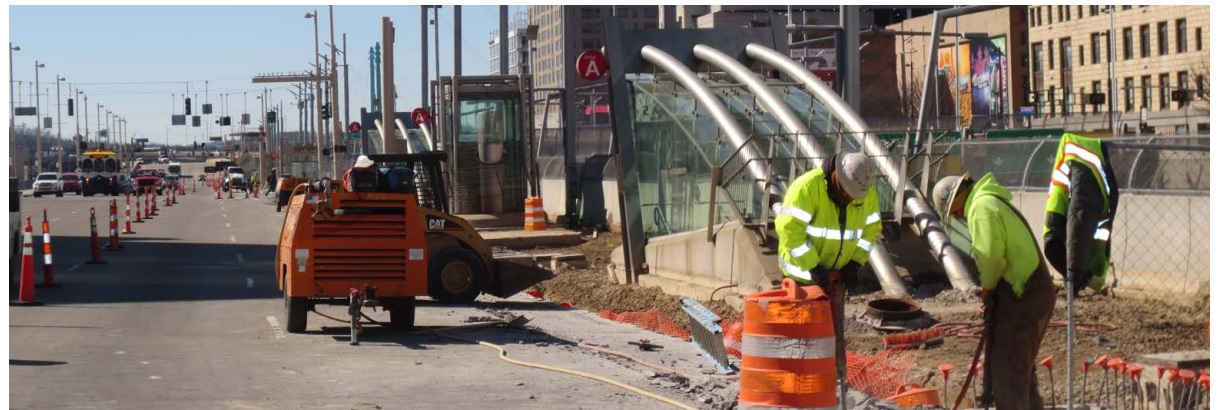
Employees living within the 15-county Cincinnati-Middletown Metropolitan Statistical Area represented 100% of the construction workforce (one contractor with workers for this period). There are no local residency participation goals for the project.

Additional information available here.

<http://thebankspublicpartnership.com/sites/default/files/economic-inclusion-feb2014.pdf>

## SAFETY

A total of 441,342 hours have been worked without a lost-time accident on Phase 1 and Phase 2a construction through February 28, 2014.



Second Street sidewalk work.



## BUDGET

As of February 28, 2014, Phase 2a Budget for Public Parties Construction remained within the published Construction Budget amount of \$53 million.

Percentage of budget expended to date is 91.79%.

Budget spreadsheet, project report as well as approved and potential change orders for the month are available.

<http://thebankspublicpartnership.com/sites/default/files/budget-feb2014.pdf>

## SCHEDULE

All Public Parties construction work remained on schedule through February 28, 2014.



Work on Second Street at Walnut.



## PARKS

Parks construction continued in February, with the following progress:

### Phase 3 Adventure Playground

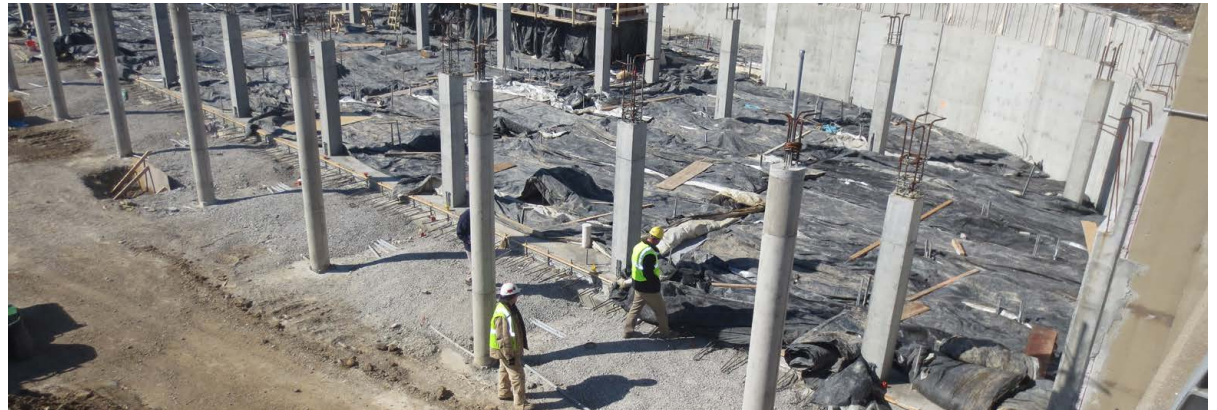
- Valley walls were placed in February; stone installation will begin in early March.
- Slide slope embankment and foundations were begun, and will continue through March.
- Bridge restroom buildings are being fabricated and underground utility work is underway.

### Phase 4 Vine Street Fountain and Carousel

- Installation of underground utilities continued.
- Slab on grade placements, as well as grade beam installation continued.

### Phase 5 south of Mehring Way, west of Roebling Bridge

- Phase 5 design continues.



The carousel building taking shape.



Progress on the Adventure Play area.

## COMMUNICATIONS

For February, media coverage included 14 broadcast/digital stories and/or mentions. <http://thebankspublicpartnership.com/sites/default/files/media-summary-feb2014.pdf>

Social media activity included 18 posts to Twitter @lBackTheBanks. Retweets reached 3,109; reply reach was 207.





## WHAT'S NEXT

Crews will continue work on Second Street and on Freedom Way. Prus will complete public safety technology installation. Parks will continue its work on additional features for Smale Riverfront Park. Developer will put finishing touches on plans for Phase IIA.



Phil Beck  
*The Banks Project Executive*  
(513) 946-4434  
[www.thebankspublicpartnership.com](http://www.thebankspublicpartnership.com)

Public Partnership

Updated 3/20/14