



THE BANKS

Public Partnership

PROGRESS REPORT

JULY 2012

Published August 20, 2012

The Banks Project



DESIGN CRITERIA

MEHRING WAY:
 DESIGN SPEED - 35MPH
 2009 ADT - 11,700 VEHICLES/DAY
 TED BERRY WAY:
 ADT 1000 VEHICLES/DAY
 DESIGN SPEED-25MPH
 ELM STREET
 DESIGN SPEED - 35MPH
 ADT 3500 ADT
 MAIN STREET:
 DESIGN SPEED - 35MPH
 ADT 1500 VEHICLES/DAY
 DESIGN EXCEPTIONS:
 NONE

2008 SPECIFICATIONS :

THE STANDARD SPECIFICATIONS OF THE STATE OF OHIO DEPARTMENT OF TRANSPORTATION AND THE CITY OF CINCINNATI SUPPLEMENT THERETO, INCLUDING THE SPECIAL PROVISIONS LISTED IN THE BID DOCUMENT SHALL GOVERN THIS IMPROVEMENT. ADDITIONALLY BOTH ODOT STANDARD DRAWINGS AND THE CITY OF CINCINNATI SHALL BE OBSERVED

NOTES :

THE LOCATION OF THE UNDERGROUND UTILITIES SHOWN ON THESE PLANS HAS BEEN OBTAINED BY DILIGENT FIELD CHECKS AND SEARCHES OF AVAILABLE RECORDS. THE CITY OF CINCINNATI DOES NOT GUARANTEE THE ACCURACY OF THE AFOREMENTIONED LOCATIONS AND ACCEPTS NO RESPONSIBILITY FOR ANY EXPENSE RESULTING FROM ERRORS OR OMISSIONS OF UTILITY LOCATIONS. CONTRACTOR(S) SHALL BE RESPONSIBLE FOR VERIFYING THE LOCATIONS OF ALL UTILITIES IN THE FIELD PRIOR TO THE START OF ANY WORK. NOTIFY PROJECT ENGINEER OF ANY DISCREPANCIES OR CONFLICTS PRIOR TO BEGINNING WORK IN AFFECTED AREA.

INDEX OF SHEETS :

TITLE SHEET	1
ROEBLING BRIDGE PEDESTRIAN CONNECTOR	R1-R19
TYPICAL SECTIONS - RIVER WALK	A2-A3
PLAN/PROFILE - RIVER WALK	A4-A6
CROSS SECTIONS - RIVER WALK	A7-A15
RETAINING WALL - RIVER WALK	A16-A23

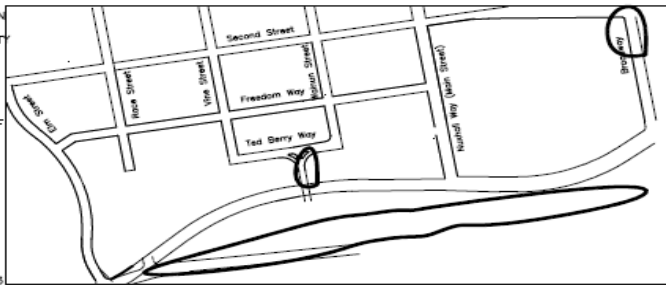
CITY OF CINCINNATI
 DEPARTMENT OF TRANSPORTATION AND ENGINEERING

PROPOSED IMPROVEMENT Bid Package #12 B

River Walk - Broadway to Elm Roebling Pedestrian Connector Broadway Pedestrian Bridge

PROJECT DESCRIPTION:

THIS PROJECT CONSISTS OF THE FOLLOWING COMPONENTS:
 1. INSTALL PEDESTRIAN CONNECTOR ON ROEBLING SUSPENSION BRIDGE
 2. CONSTRUCTION OF RIVERWALK ALONG MEHRING WAY AND THE RIVERS EDGE BETWEEN BROADWAY AND ELM
 3. REMOVE AND REPLACE STAIRS AND PEDESTRIAN BRIDGE OVER BROADWAY



VICINITY PLAN
 Scale: 1 Inch = 250'

RECOMMENDED:	_____	DATE
	LPA ENGINEER	
RECOMMENDED:	_____	DATE
	PRINCIPAL CONSTRUCTION ENGINEER	
APPROVED :	_____	DATE
	CITY TRAFFIC ENGINEER	
APPROVED :	_____	DATE
	CITY ENGINEER	
APPROVED :	_____	DATE
	CITY ARCHITECT	
APPROVED :	_____	DATE
	DIRECTOR OF TRANSPORTATION AND ENGINEERING	

STANDARD CONSTRUCTION DRAWINGS		
ODOT		
F-1.1	7-16-04	AS 1-81 7-19-02
		SUPPLEMENTAL SPECS
		800 2008
		802 4-15-05
		832 4-25-06
		878 4-18-08
		AS 1.81 7-19-02
CITY ACC. NO		
CITY STAND. DWGS		
21432	49017	ES-1-1
21516	49001	ES-2-1
22855	49041	ES-4-1
27256	49016	ES-8-1B
21502		ES-8-7B
120282		

Oil and Gas Producers Protective Service
 call 1-800-925-0988

CAUTION UNDERGROUND UTILITIES
 2 WORKING DAYS
BEFORE YOU DIG
 CALL 1-800-362-2764
 OHIO UTILITY PROTECTION SERVICE
 CALL NON-SERVICE FACILITY OWNERS DIRECT

PROFESSIONAL STAMP

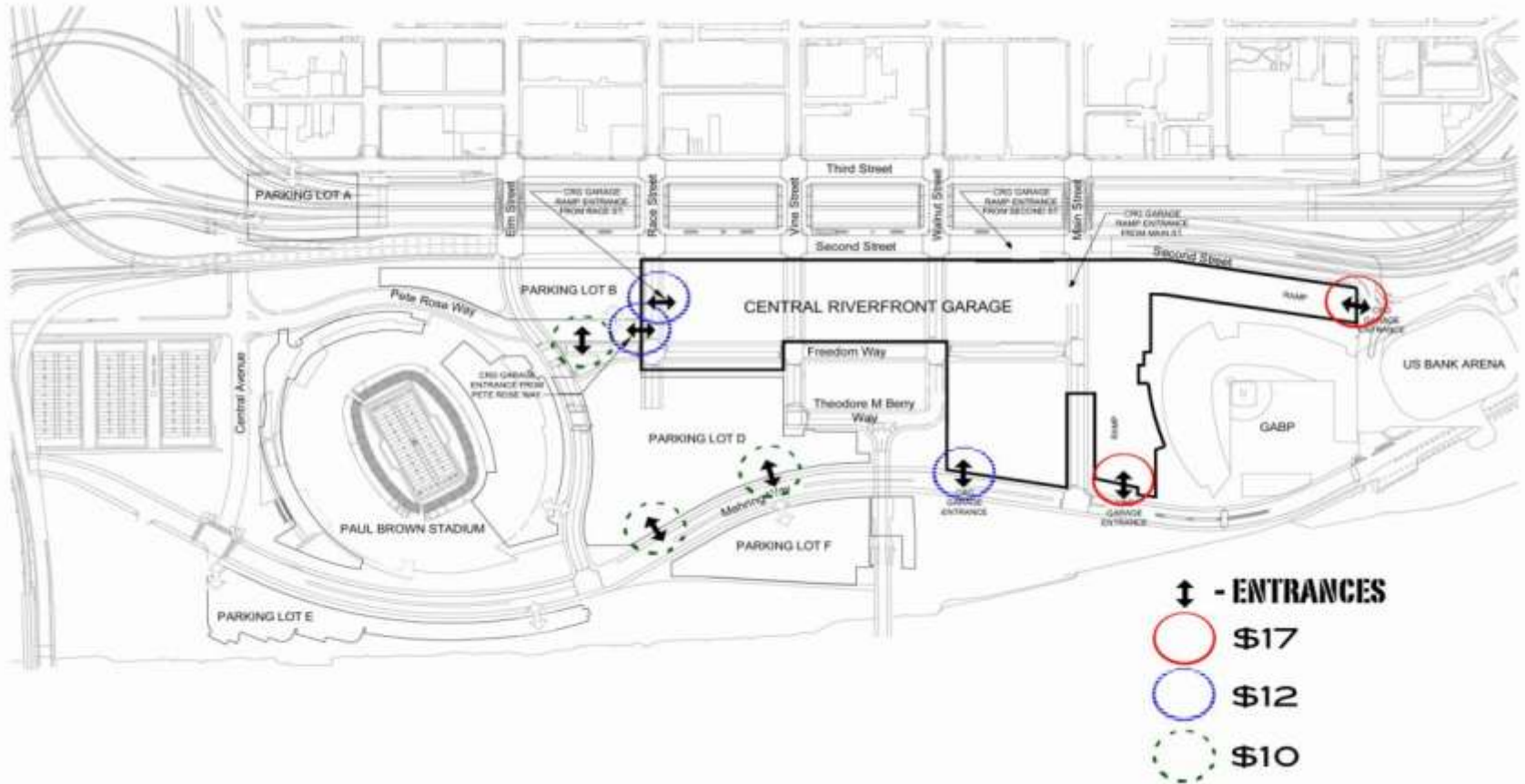


Executive Summary



Baseball Parking

Many convenient access points



Central Riverfront Garage

Stairwell mosaic charts flood levels



Summary: July Construction

- **Public Safety Technologies**

- *TC-28 work progress*

- ESI Electrical Contractor completed all contracted work.
 - Contractor working on final punch list item and gathering all documents for final closeout
-

Bid Package #12

Part 1 Elements

- Reconstruction of Freedom Way
- Second Street pedestrian improvements
- Security cameras
- Removal of Race Street south of Freedom Way

July Progress

- Confirmed compatibility of camera locations with pending street car project, and coordination with Parks
 - Prepared general requirements for TC-29 contract (Freedom Way, Second Street, Race Street)
 - All work being prepared for Stage 3 submittal in September, prior to final submittal in November
 - Anticipate bidding this work by end of year
-

Bid Package #12

Part 2 Elements

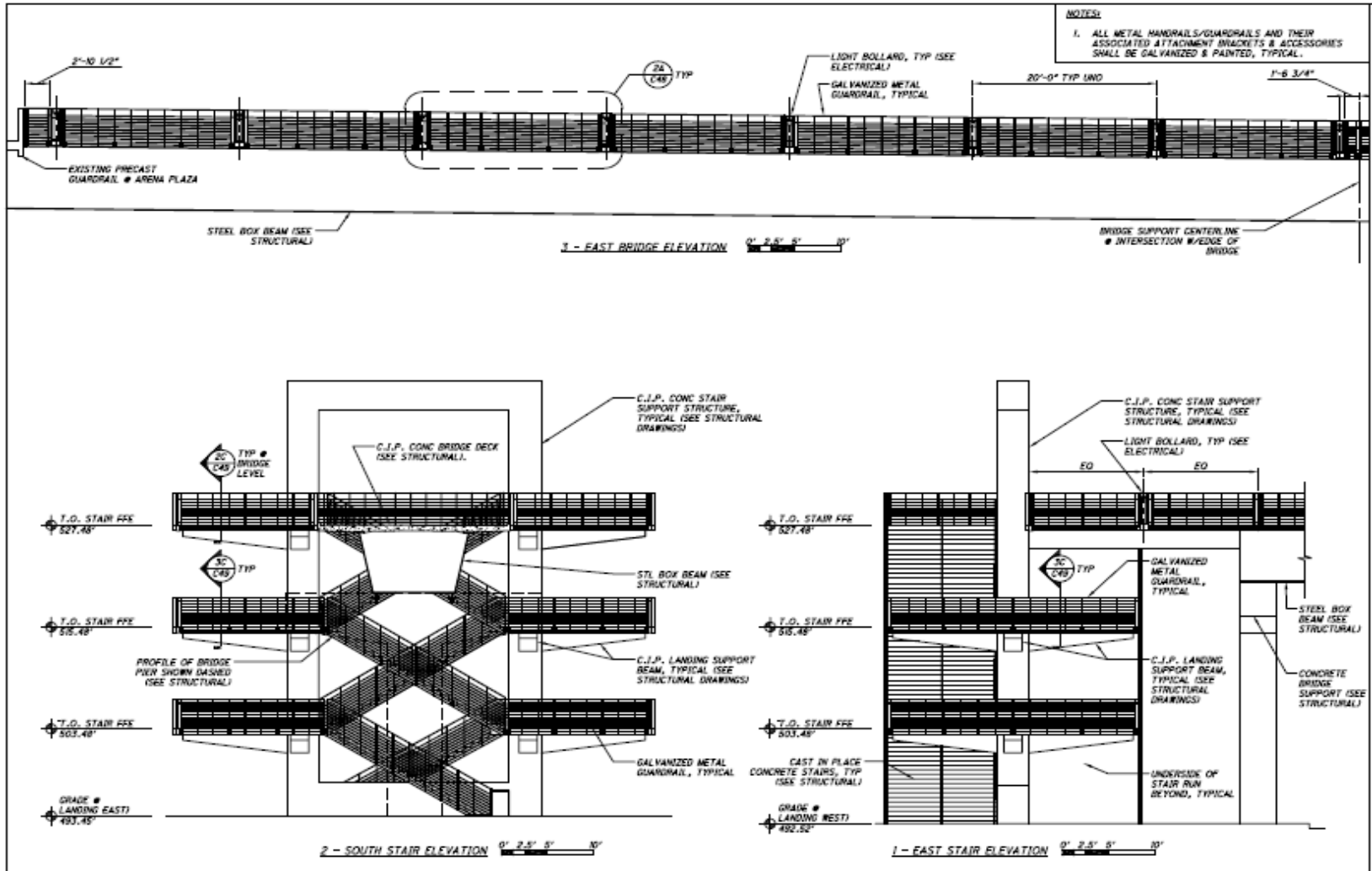
- Roebling Bridge pedestrian connector
- River Walk along Mehring Way
- Pedestrian bridge at Broadway & East Pete Rose Way, Intermodal Staging Area

July Progress

- Awaiting approval of updated Stage 2 Plan submitted to ODOT and City for review, prior to submittal of final plans and specifications to ODOT on August 1
 - Further updates on environmental document provided to ODOT
 - Anticipate bidding this work by October 1
-

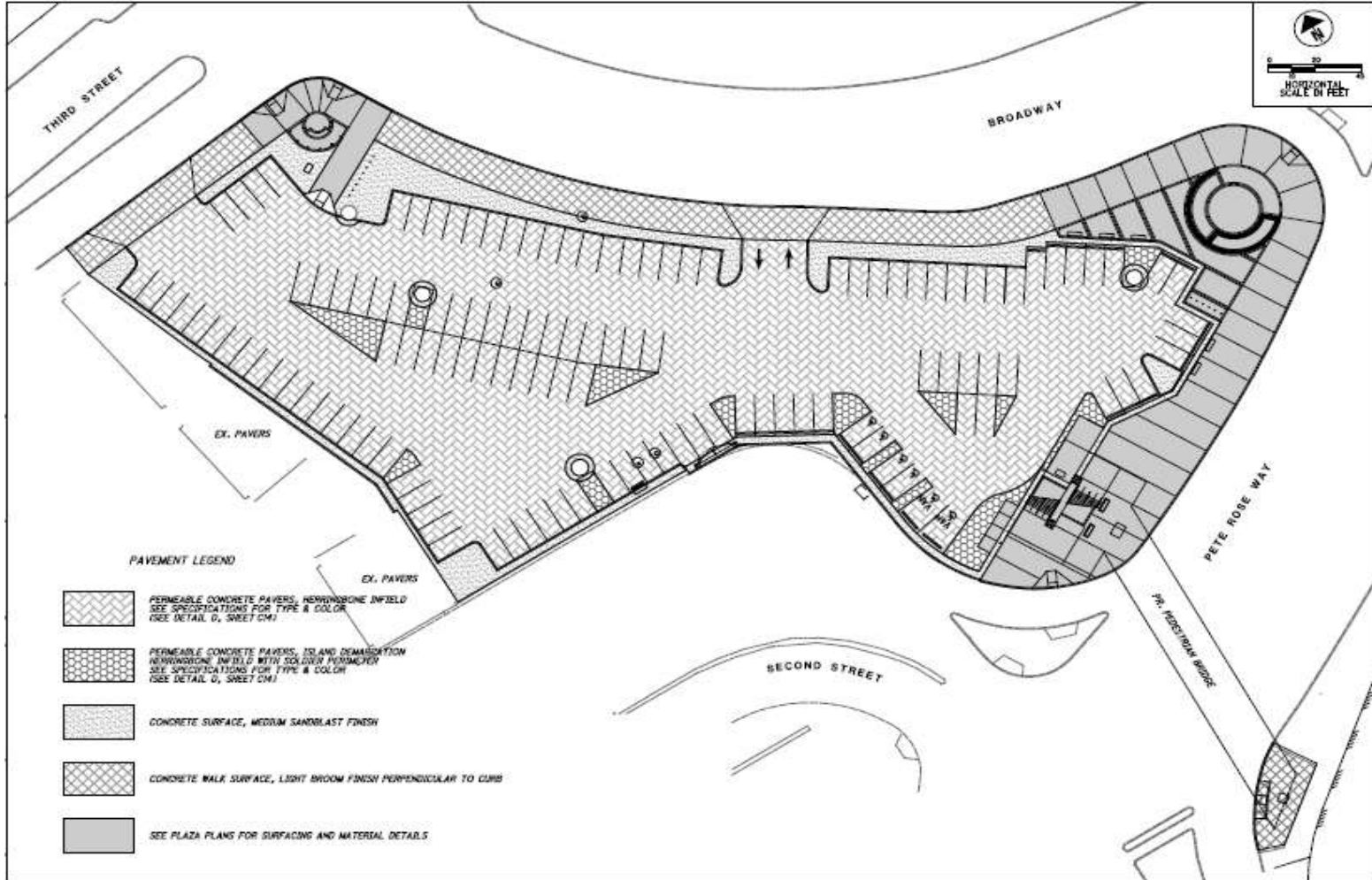
Pete Rose Way Pedestrian Bridge

BP#12—Part 2



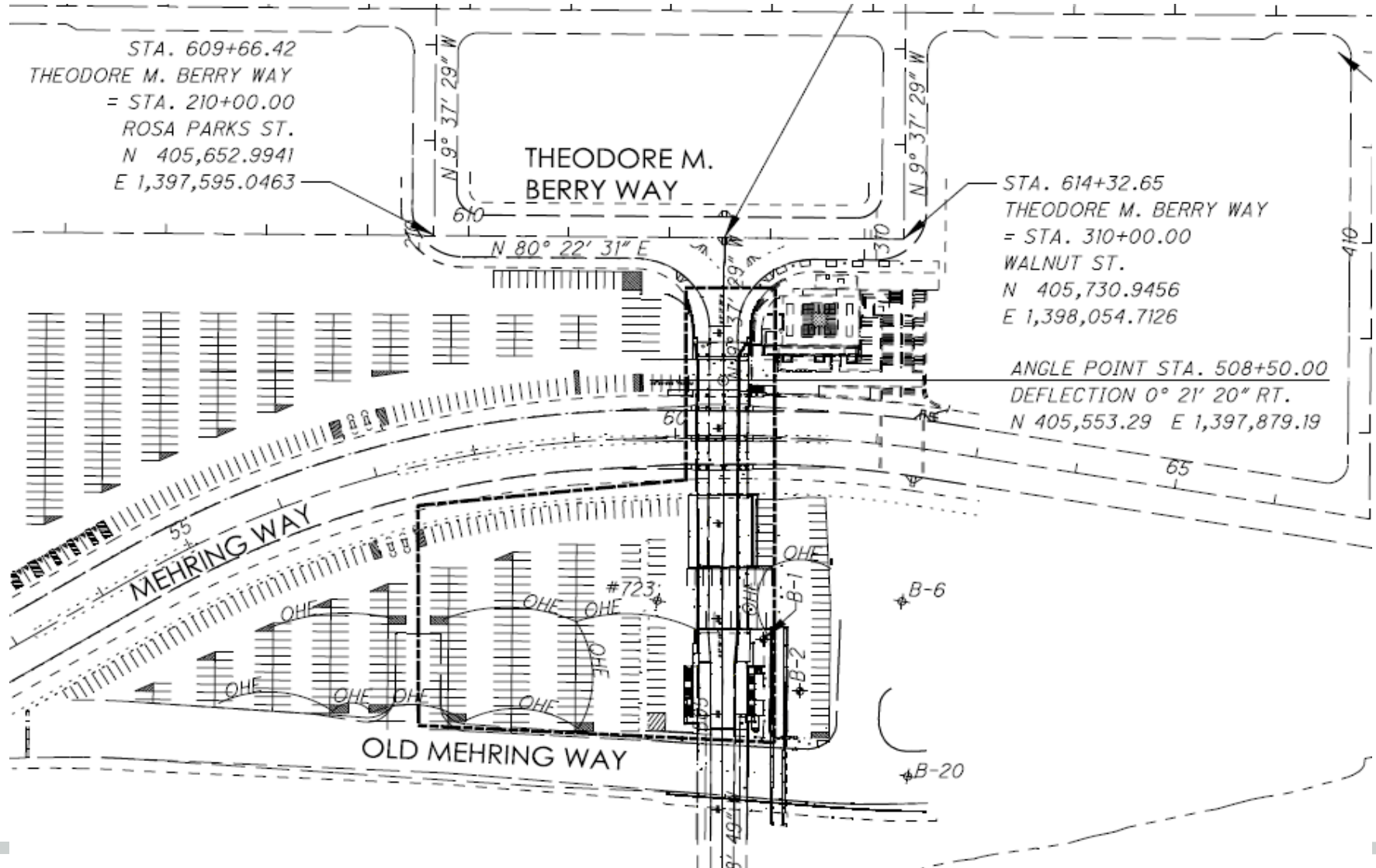
Intermodal Staging Area

BP#12—Part 2



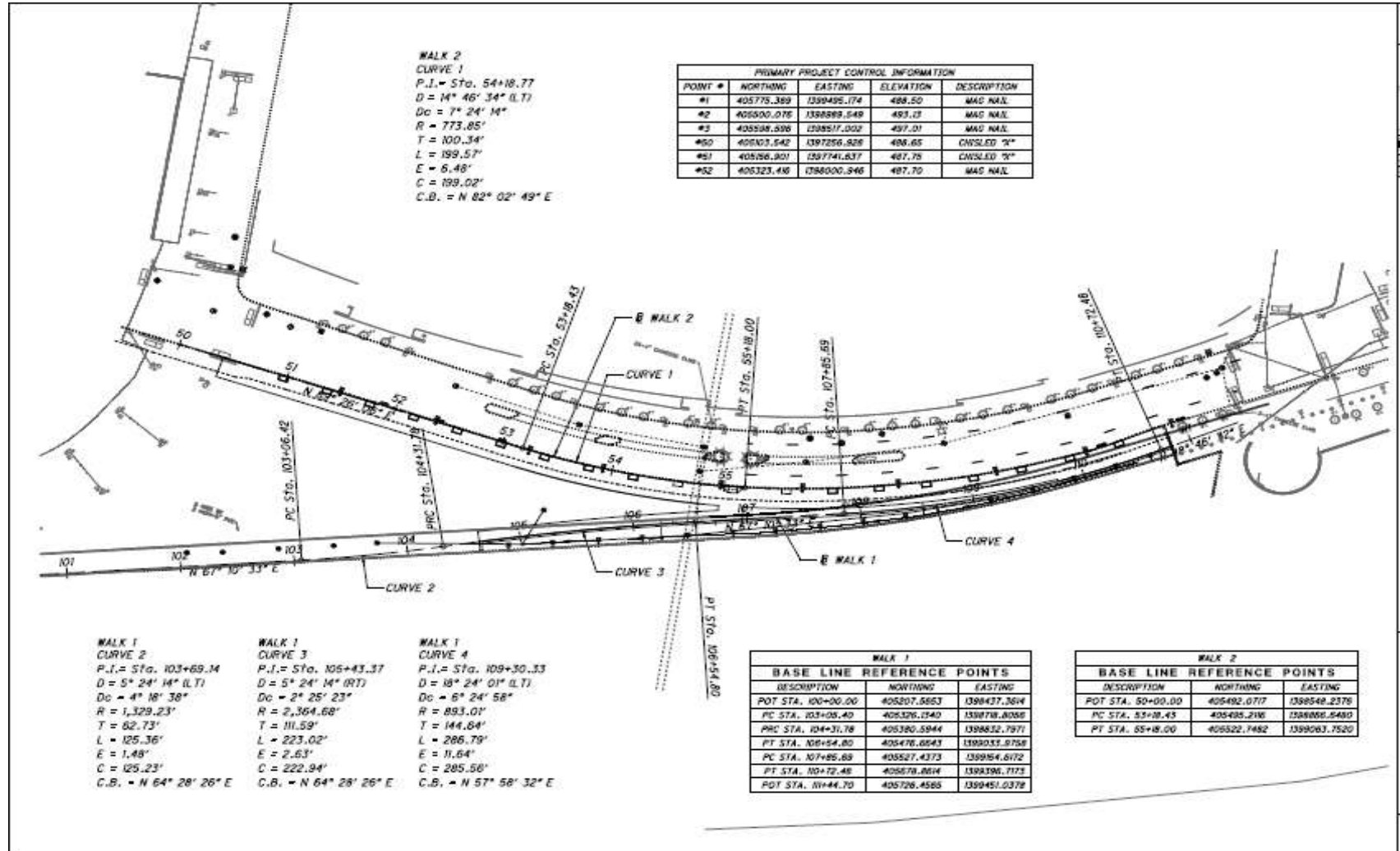
Roebbling Bridge Walkway

BP#12—Part 2



River Walk

BP#12—Part 2



Summary: Budget

- All Phase 1 and initial Phase 2a contract work is complete and closed out, including parking garage extensions to the Intermodal Transit Center, Riverfront Street Grid, and utility networks.
 - All public parties construction work has continuously operated within budget.
 - Final payments made to all contractors; all grant monies expended, and ODOT has provided final reimbursements--with exception of TC-28 which is still open
-

Summary: Budget

- Click the link below for Phase 1 final construction budget, Phase 2a construction budget, and TC-28 change order report as of July 31, 2012.
 - <http://www.thebankspublicpartnership.com/sites/default/files/budget-july2012.pdf>
-

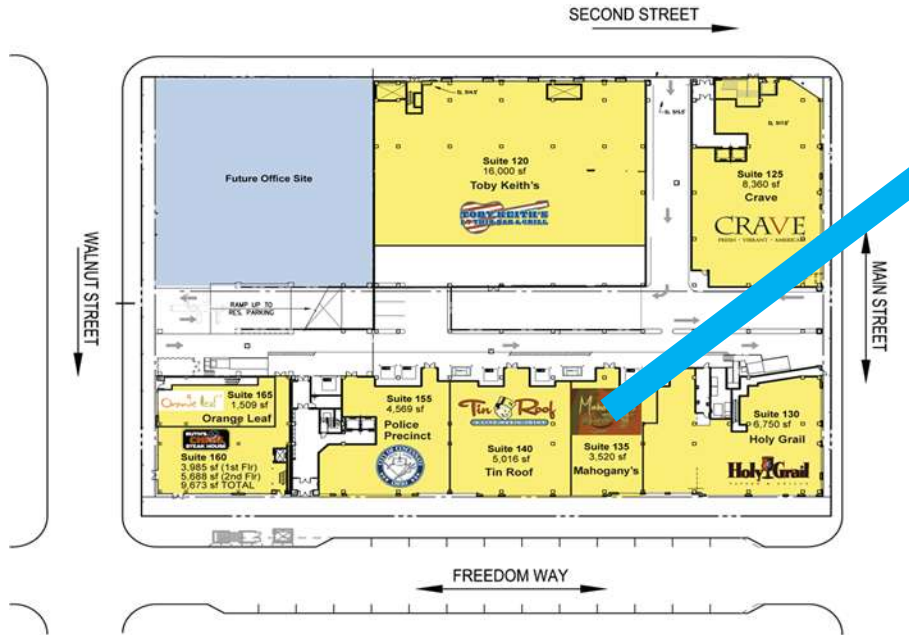
Summary: Developer

Carter-Dawson

- Residential 100% leased, with waiting list
 - Commercial 84% leased
 - **Yard House** lease executed.
 - **Mahogany's** is open.
 - **Tin Roof, Wine Guy and Ruth's Chris** all under **construction** for Fall openings.
-

Developer's Report: Construction Photographs

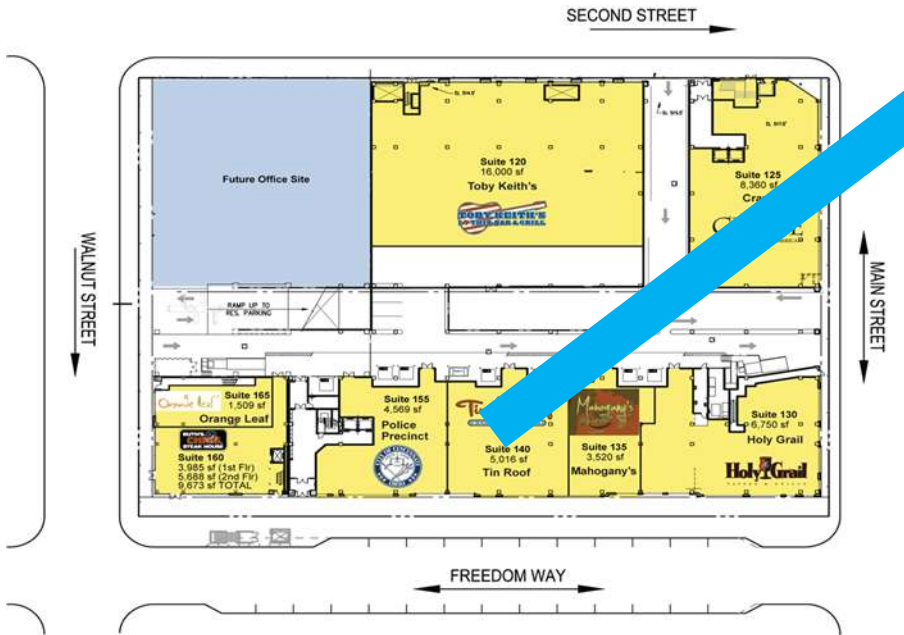
Mahogany's Opened July 27.



Developer's Report: Construction Photographs

Tin Roof

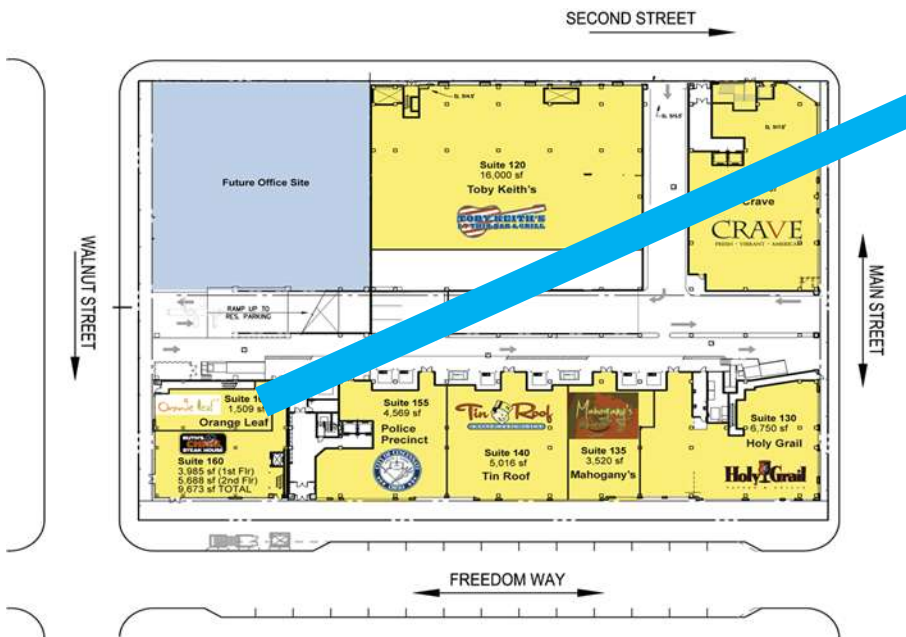
Construction underway; will open late August/early September.



Developer's Report: Construction Photographs

Ruth's Chris

Ruth's Chris is under construction and targeting an October opening.



Developer's Report: Construction Photographs

Wine Guy

Construction underway in advance of a planned opening late September.



What's next?



Block 2

Block 17

Hotel Site

Summary: Economic Inclusion



Summary: Economic Inclusion



Small Business Enterprise (SBE) participation for **Construction** through 06/25/12 is **36%** (goal is 30%)

- *Minority Business Enterprise (MBE): 16%*
- *Women Business Enterprise (WBE): 2.8%*

The Banks SBE Program is race and gender neutral; there are no MBE or WBE goals.

Bid Package No.	ODOT DBE Goal	Contractor Commitment	Committed DBE Amount*	Actual DBE Participation	Actual DBE Amount*
5	8.0%	10.8%	\$618,354	12.0%	\$746,386
7	8.0%	10.7%	\$544,316	11.7%	\$676,741
6	5.0%	5.0%	\$536,229	5.4%	\$615,285
9	4.0%	4.9%	\$351,241	5.6%	\$412,761
11	8.0%	8.2%	\$1,828,156	7.8%	\$1,846,808

*Goal achieved if Actual DBE Amount equals or exceeds the Committed DBE Amount.

Economic Inclusion

SBE participation for **Professional Services** through 06/25/12 is **12.9%** (goal is 10%)

- *MBE:* 11.2%
- *WBE:* 2.7%

The Banks SBE Program is race and gender neutral; there are no MBE or WBE goals.

- **Workforce Data**

- Combined **Minority/Female Workforce participation** is **17.4%** as of 06/25/12
 - **Total Minority Workforce participation** is **16.11%**
-

• Workforce Data

- For the one-month period ending 06/25/12, **100%** of the **workers** lived within the 15-County Cincinnati-Middletown Metropolitan Statistical Area (MSA)
- For the project (**1,428 workers**), local residency participation is
 - Tri-State 97.7%
 - Cincinnati-Middletown MSA 77.3%
 - Hamilton County 25.6%
 - City of Cincinnati 9.1%

There are no local residency participation goals.

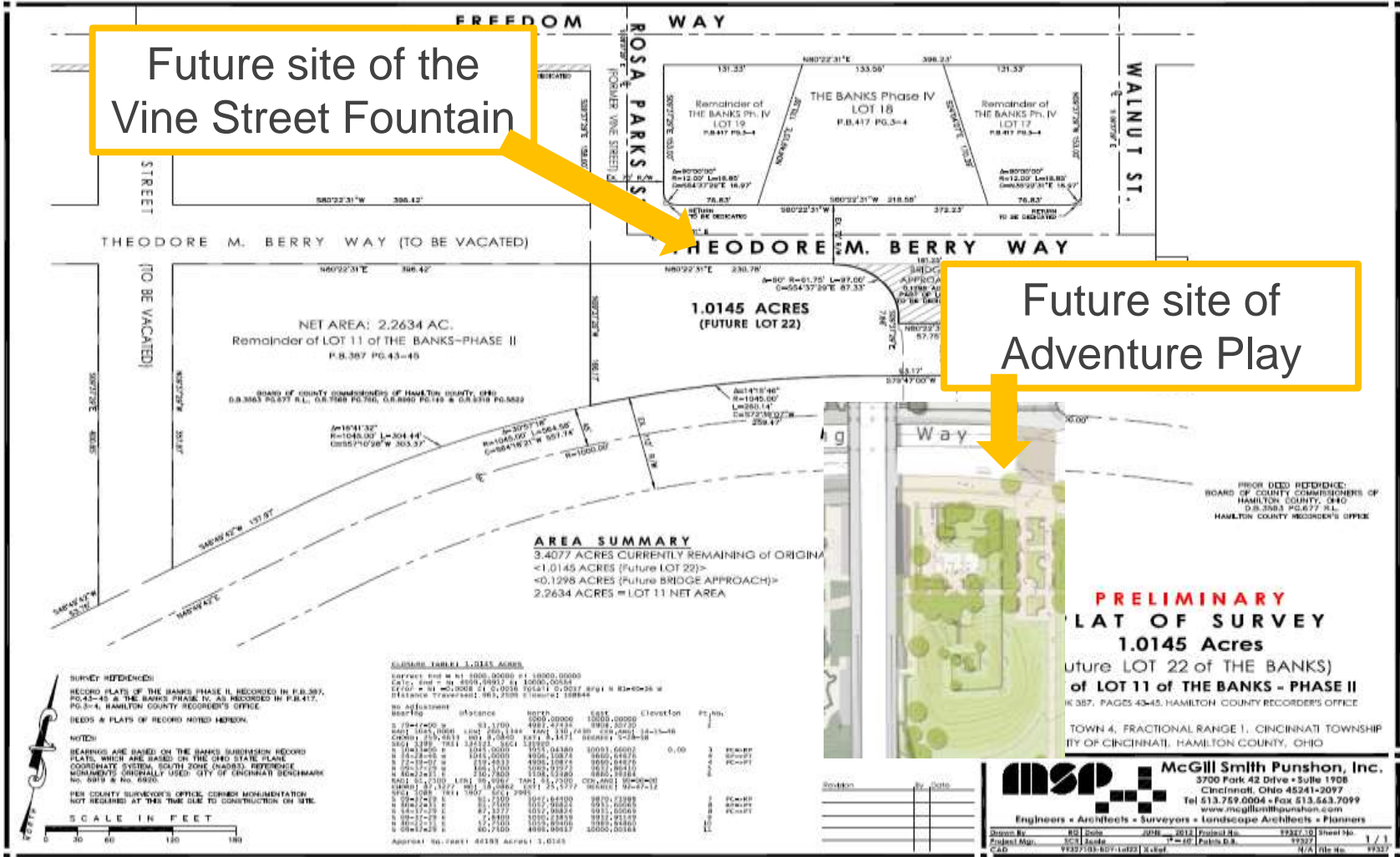
Click here for Economic Inclusion reports:

<http://thebankspublicpartnership.com/sites/default/files/economic-inclusion-july2012.pdf>

Summary: Safety

- The TC-28 Contractor, ESI, reports no lost-time accidents.
 - Phase 1 and Phase 2a construction closed out with no lost-time accidents in over 416,000 hours worked.
-

Cincinnati Parks Smale Riverfront Park Plan



Cincinnati Parks

- Main Street Fountain, Black Brigade Monument, Labyrinth and large portion of the Tree Grove are complete.
 - Work on the East Grove, The River Walk wall and railing work will begin in August.
 - Bike Path extension, the Women's Committee Garden, and future Park features planning continues.
 - Landscaping throughout Phase 3 will begin in September.
 - Construction will continue in these areas through 2013.
-

Communications

The Banks Project in the News



- 20 articles mentioning The Banks appeared in July
- 1 presentation for DBE Outreach Session (July 31)
- Began regular schedule of messages via Twitter [*@IBackTheBanks*], emphasizing parking access, attractions, activities and events at The Banks
- There will be no August Monthly Report; progress for August will be combined with September and published October 20, 2012.
- Link to Media Summary:
 - <http://www.thebankspublicpartnership.com/sites/default/files/media-summary-july2012.pdf>

Progress: July 2012



For more information:
John F. Deatruck
The Banks Project Executive
(513) 946-4434

john.deatruck@hamilton-co.org

<http://www.thebankspublicpartnership.com>
